

1

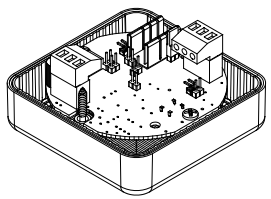
LED COMPONENT PART OF STA & STB ASSEMBLY

PLEASE SEE FULL INSTRUCTION OF STA & STB

Order Code	Nominal Voltage	Voltage Range	Nominal Current (mA)				Max Current
			@1Hz	@1.5Hz	@2Hz	STEADY ON*	
ST-L101HDC012A1[y]	12 vdc	10-14 vdc	79.5	84	87	167.5	168mA @14vdc
ST-L101HDC024A1[y]	24 vdc	16-33 vdc	86.5	91	96	178.5	183mA @33vdc
ST-L101HDC048A1[y]	48 vdc	48-260 vdc	51	58	62.5	115	115mA @48vdc
ST-L101HAC230A1[y]	115 vac	48-260 vac	34	37.5	40	85.5	166mA @48vac
	230 vac	48-260 vac	18.5	19.5	23.5	53	166mA @48vac

*Unspecified flash rates will be lower current draws than Steady On, use Steady On current figures as worst case

[y] Denotes Lens Colour: A = Amber; B = Blue; C = Clear; G = Green; M = Magenta; R = Red; Y = Yellow



ST-L101H LED Beacon (DC shown)



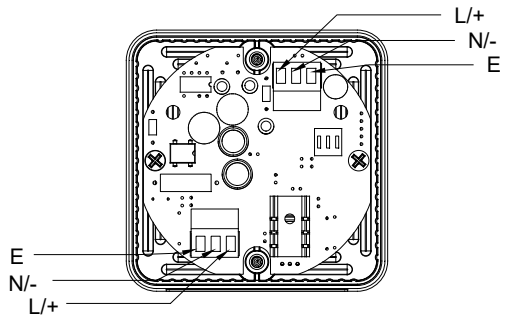
2

Warnings

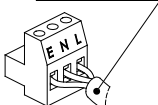
- ATTENTION Installation must be carried out by an electrician in compliance with the latest codes and regulations.
- ATTENTION Disconnect from power source before installation or service to prevent electric shock.

3

AC Terminals



CONNECTION FROM STA/STB CABLE LOOM.

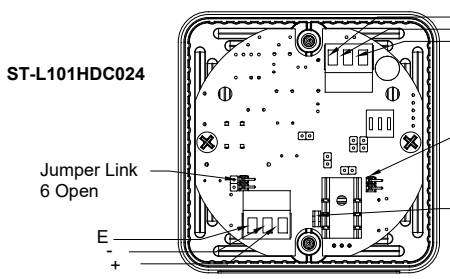


AC Cabling

AC TERMINAL	CABLE COLOUR
EARTH	GREEN
LIVE	BLACK
NEUTRAL	WHITE

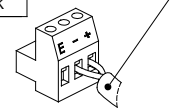
4

DC Terminals & Reference for Voltage Link Settings



DC TERMINAL	CABLE COLOUR
EARTH	-
-VE	WHITE
+VE	BLACK

CONNECTION FROM STA/STB CABLE LOOM.



DC Cabling

ST-L101HDC024

- Jumper Link 6 Open
- Jumper Link 4 Open
- Jumper Link 5 Closed

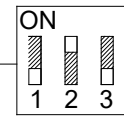
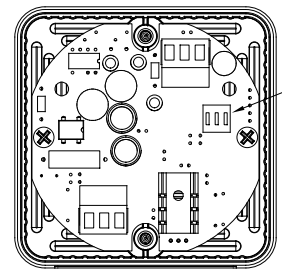
Jumper Setting	Jumper Link 4	Jumper Link 5	Jumper Link 6
24VDC Mode (Default)	Open	Closed	Open
12VDC Mode (Customer set)	Closed	Open	Closed

ST-L101HDC012

- Jumper Link 6 Closed
- Jumper Link 4 Closed
- Jumper Link 5 Open

5

Flash Settings (All Units)



Flash Mode Dip Switch Shown with 1-OFF, 2-ON, 3-OFF (0 1 0). This denotes flash mode 1Hz. For further flash modes, see table adjacent

Switch Setting	Flash Mode
(0 0 0)	Steady On
(1 0 0)	Blinking
(0 1 0)	Flashing 1Hz
(1 1 0)	Flashing 1.5Hz
(0 0 1)	Flashing Double Strike
(1 0 1)	Flashing Triple Strike
(0 1 1)	Flashing 2Hz
(1 1 1)	Flashing - Temporal

RELATED DRAWING

No modification permitted without reference to the "Authorised Person"