

Punches

Round punch with thread Ø 9.5 mm



Features

- For punching of sheet metal with punching pumps or with square actuation screws.

Product Description

- For actuation screws with Ø 9.5 mm

Technical Data

- Four-edged hole punch
- Pre-drilling Ø: 10.5 mm

Scope of Delivery

- Punch complete with stamp and die

Note

Actuation screw not included. For respective actuation screw, see related tool or under the accessories section. For functional feature see introduction page of "Mobile devices".

Description	Size		Metrical	PG	Sheet steel thickness		Order No.
	mm	inch			mm	ga	
Round punch with thread Ø 9.5 mm	12.7	0.5	M 12 x 1.5	PG 7	1.5	16	2623-0812-70-00
	14	0.55			1.5	16	2623-0814-00-00
	15.2	0.6		PG 9	1.5	16	2623-0815-20-00
	16.3	0.64	M 16 x 1.5		2	14	2623-0816-30-00
	17.3	0.68			2	14	2623-0817-30-00
	18.6	0.73	M 18 x 1.5	PG 11	2	14	2623-0818-60-00
	19	0.75			2	14	2623-0819-00-00
	20.4	0.8	M 20 x 1.5	PG 13	3	11	2623-0820-40-00
	21.3	0.84			3	11	2623-0821-30-00
	22.5	0.89		PG 16	3	11	2623-0822-50-00
	23.8	0.94			3	11	2623-0823-80-00
	24.5	0.96			3	11	2623-0824-50-00
	25.4	1	M 25 x 1.5		3	11	2623-0825-40-00
	27	1.06			2	14	2623-0827-00-00
	28.5	1.12		PG 21	2	14	2623-0828-50-00
	30.5	1.2	M 30 x 1.5		2	14	2623-0830-51-00
	33.3	1.31			2	14	2623-0833-30-00
	35	1.38			2	14	2623-0835-01-00
	38.1	1.5			2	14	2623-0838-11-00

Actuation screw without ball bearing Ø 9.5 mm



Features

- For the occasional operation of round punches without punching pumps.
- Operation through open-end wrench.

Scope of Delivery

- 1 actuation screw

Note

For pre-drilling, please use Ø 10.5 mm drill. It is imperative to use cutting oil!

Description	Shaft diameter		Size		Order No.
	mm	inch	mm	inch	
Actuation screw without ball bearing	17	0.67	9.5 x 50	0.37 x 1.97	2683-0710-50-00

Actuation screw with ball bearing Ø 9.5 mm



Features

- For the occasional operation of round punches without punching pumps.
- Operation through open-end wrench.

Product Description

When using the open-end wrench, the operating force is reduced with up to 50%.

Scope of Delivery

- 1 actuation screw

Note

For pre-drilling, please use Ø 10.5 mm drill. It is imperative to use cutting oil!

Description	Shaft diameter		Size		Order No.
	mm	inch	mm	inch	
Actuation screw with ball bearing	17	0.67	9.5 x 50	0.37 x 1.97	2683-1710-50-00

Actuation screw without ball bearing Ø 19 mm



Features

- For the occasional operation of round punches without punching pumps.
- Operation through open-end wrench.

Scope of Delivery

- 1 actuation screw

Note

A sheet metal shell drill is well suited for pre-drilling of Ø 20 mm. It is imperative to use cutting oil!

Accessories

- Sheet metal shell drill bit → page 84

Description	Shaft diameter		Size		Order No.
	mm	inch	mm	inch	
Actuation screw without ball bearing	25	0.98	19 x 50	0.75 x 1.97	2683-0719-75-00

Actuation screw with ball bearing Ø 19 mm



Features

- For the occasional operation of round punches without punching pumps.
- Operation through open-end wrench.

Product Description

When using the open-end wrench, the operating force is reduced with up to 50%.

Scope of Delivery

- 1 actuation screw

Note

A sheet metal shell drill is well suited for pre-drilling of Ø 20 mm. It is imperative to use cutting oil!

Accessories

- Sheet metal shell drill bit → page 84

Description	Shaft diameter		Size		Order No.
	mm	inch	mm	inch	
Actuation screw with ball bearing	25	0.98	19 x 50	0.75 x 1.97	2683-1719-75-00

Punches

Round punch with thread Ø 19 mm



Features

- For punching of sheet metal with punching pumps or with square actuation screws.

Product Description

- For actuation screws with Ø 19 mm

Technical Data

- Four-edged hole punch
- Pre-drilling or pre-punch Ø: 20 or Ø 20.4 mm

Scope of Delivery

- Punch complete consisting of stamp and die

Note

Actuation screw not included. For respective actuation screw, see related tool or under the accessories section.

For functional feature see page 35.

Description	Size		Metrical	PG	Sheet steel thickness		Order No.
	mm	inch			mm	ga	
Round punch with thread Ø 19 mm	28.3	1.11		PG 21	2	14	2623-0828-30-00
	30.5	1.2	M 30 x 2		3	11	2623-0830-50-00
	32	1.26			3	11	2623-0832-00-00
	32.5	1.28	M 32 x 1.5		3	11	2623-0832-50-00
	34.1	1.34			3	11	2623-0834-10-00
	35.1	1.38			3	11	2623-0835-00-00
	37	1.46	M 36 x 2	PG 29	3	11	2623-0837-00-00
	38	1.5			3	11	2623-0838-00-00
	40.5	1.59	M 40 x 1.5		3	11	2623-0840-50-00
	41.2	1.62			3	11	2623-0841-20-00
	43.3	1.7			3	11	2623-0843-30-00
	45.5	1.79			3	11	2623-0845-50-00
	47	1.85		PG 36	3	11	2623-0847-00-00
	50.5	1.99	M 50 x 1.5		3	11	2623-0850-50-00
	54	2.13		PG 42	3	11	2623-0854-00-00
	56.5	2.22			3	11	2623-0856-50-00
	60	2.36		PG 48	3	11	2623-0860-00-00
	63.5	2.5	M 63 x 1.5		3	11	2623-0863-50-00
	64.4	2.54			3	11	2623-0864-40-00
	66.6	2.62			3	11	2623-0866-60-00
	70	2.76			2	14	2623-0870-00-00
	76.2	3			2	14	2623-0876-20-00
	80	3.15			2	14	2623-0880-00-00
	82	3.23			2	14	2623-0882-00-00
	88.5	3.48			2	14	2623-0888-50-00
	92	3.62			2	14	2623-0892-00-00
	102	4.02			2	14	2623-0810-20-00
	114.3	4.5			2	14	2623-0811-43-00
120	4.72			2	14	2623-0812-01-00	

Round punch Plus



Features

- For the punching of sheet metal.
- Especially developed to punch stainless steel, although steel is also possible.

Product Description

- Prolonged service life
- Clean hole pattern
- Splitted cutting waste (up to Ø 32.5 mm)
- Through the special cutting shape of the stamp, the punching force is reduced by 40%. Thereby relieving pressure on punches and actuation screw.

- Maximum sheet metal thickness, see hydraulic pumps specifications.

Scope of Delivery

- Punch complete consisting of stamp and die

Note

Actuation screw with Ø 11.1 mm, is not included in the delivery of hydraulic punches. For respective actuation screw, see related tool or under the accessories section. Use cutting oil to reduce wear and tear. For functional feature see page 35.

Description	Size		Metrical	PG	Screw housing		Pre-drill		Stainless steel thickness		Order No.
	mm	inch			mm	inch	mm	inch	mm	ga	
Round punch Plus	15.2	0.6		PG 9	9.5	0.37	10.5	0.41	1.5	16	2682-0815-20-25
	16.5	0.65	M 16 x 1.5		9.5	0.37	10.5	0.41	2	14	2682-0816-50-25
	18.6	0.73		PG 11	11.1	0.44	12	0.47	2	14	2682-0818-60-25
	20.4	0.8	M 20 x 1.5	PG 13	11.1	0.44	12	0.47	2	14	2682-0820-40-25
	22.5	0.89		PG 16	11.1	0.44	12	0.47	2	14	2682-0822-50-25
	25.5	1	M 25 x 1.5		11.1	0.44	12	0.47	2	14	2682-0825-50-25
	28.5	1.12		PG 21	19	0.75	20.4	0.8	2	14	2682-0828-50-25
	30.5	1.2			19	0.75	20.4	0.8	2.5	12	2682-0830-50-25
	32.5	1.28	M 32 x 1.5		19	0.75	20.4	0.8	2.5	12	2682-0832-50-25
	37	1.46		PG 29	19	0.75	20.4	0.8	2.5	12	2682-0837-00-25
	40.5	1.59	M 40 x 1.5		19	0.75	20.4	0.8	2.5	12	2682-0840-50-25
	47	1.85		PG 36	19	0.75	20.4	0.8	2.5	12	2682-0847-00-25
	50.5	1.99	M 50 x 1.5		19	0.75	20.4	0.8	2.5	12	2682-0850-50-25
	54	2.13		PG 42	19	0.75	20.4	0.8	2.5	12	2682-0854-00-25
	60	2.36		PG 48	19	0.75	20.4	0.8	2.5	12	2682-0860-00-25

Round punch Plus kit, metric Ø 16.5 mm - Ø 50.5 mm



Features

- For the punching of sheet metal.
- Specially designed for the punching of stainless steel, although steel is also possible.
- With a selection of the most common sizes in a set.

Product Description

- With round punches Ø: 16.5; 20.4; 25.5; 32.5; 40.5 and 50.5 mm

- For the processing of stainless steel

Scope of Delivery

- 1 set of 6 round punches
- 1 metal case with foam insert

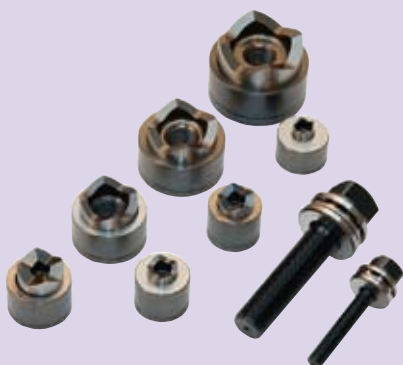
Note

Actuation screw Ø 11.1 mm required with punch. Use cutting oil to reduce wear and tear.

Description	Weight		Order No.
	kg	lbs	
Round punch Plus kit, metric Ø 16.5 mm - Ø 50.5 mm	0.8	1.76	2682-7816-50-25

Punches

Round punch kit, metric Ø 12.7 mm - Ø 50.5 mm



Features

- For punching of sheet metal with punching pumps or with square actuation screws.
- With a selection of the most common sizes in a set.

Product Description

- With round punches Ø: 12.7; 16.3; 20.4; 25.4; 32.5; 40.5 and 50.5 mm
- Ø 9.5 mm and Ø 19 mm actuation screws required

Scope of Delivery

- 1 set; depending on option selected, with or without actuation screws
- 1 metal case with foam insert

Note

For respective actuation screws, see related tool or under the accessories section. Use cutting oil to reduce wear and tear.

Description	Weight		Order No.
	kg	lbs	
Round punch kit, metric without screws	2.8	6.17	2623-7812-50-00
Round punch kit, metric with screws	3	6.62	2683-7812-50-20

Round punch kit, PG 7 - PG 21



Features

- For punching of sheet metal with punching pumps or with square actuation screws.
- With a selection of the most common sizes in a set.

Product Description

- With round punches PG7; 9; 11; 13; 16; 21 and Ø 30,5 mm
- Corresponds to Ø 12.7; 15.2; 18.6; 20.4; 22.5; 28.5 and 30.5 mm

- Ø 9.5 and Ø 19 mm actuation screws required

Scope of Delivery

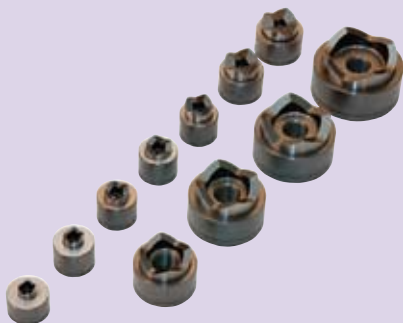
- 1 set; depending on option selected, with or without actuation screws
- 1 metal case with foam insert

Note

For respective actuation screws, see related tool or under the accessories section. Use cutting oil to reduce wear and tear.

Description	Weight		Order No.
	kg	lbs	
Round punch kit, PG 7 - PG 21 without screws	0.8	1.76	2623-7812-30-00
Round punch kit, PG 7 - PG 21 with screws	1	2.2	2683-7812-30-20

Round punch kit, PG 7 - PG 48



Features

- For punching of sheet metal with punching pumps or actuation screw with square.
- With a selection of the most common sizes in a set.

Product Description

- With round punches PG 7; 9; 11; 13; 16; 21; 29; 36; 42 and 48
- Corresponds to Ø 12.7; 15.2; 18.6; 20.4; 22.5; 28.5; 37; 47; 54 and 60 mm

- Ø 9.5 mm and Ø 19 mm actuation screws required

Scope of Delivery

- 1 set; depending on option selected, with or without actuation screws
- 1 metal case with foam insert

Note

For respective actuation screws, see related tool or under the accessories section. Use cutting oil to reduce wear and tear.

Description	Weight		Order No.
	kg	lbs	
Round punch kit, PG 7 - PG 48 without screws	2.8	6.17	2623-7812-60-00
Round punch kit, PG 7 - PG 48 with screws	3	6.62	2683-7812-60-30

Round 2 keyway punch



Features

- For punching cut-outs in sheet metal.
- Simple operation to get desired cut-outs in sheet metal.
- Fast, clean, shaving-, and burr-free.

Product Description

For components with anti-rotation feature. Produces notch grooves in size 3.3 x 2.5 mm (WxD).

Technical Data

- Screw housing \varnothing : 9.5 mm; 0.37"
- Pre-drill \varnothing : 16 mm; 0.63"
- Sheet metal thickness: 2 mm; 14 ga
- Stainless steel thickness: 1.5 mm; 16 ga

Scope of Delivery

- Punch complete with stamp, die, bolt and nut

Note

Suitable for hydraulic punching pumps

Accessories

- Spare bolt with nut → below

Description	Order No.
Round 2 keyway punch	2623-0922-52-00

Accessories

Spare bolt with nut



Order No.
2623-0712-12-00

Square punch 15.8



Features

- For punching cut-outs in sheet metal.
- Simple operation to get desired cut-outs in sheet metal.
- Fast, clean, shaving-, and burr-free.

Technical Data

- Screw housing \varnothing : 9.5 mm; 0.37"
- Pre-drill \varnothing : 13 mm; 0.51"
- Sheet metal thickness: 2 mm; 14 ga

Scope of Delivery

- Punch complete with stamp, die, bolt and nut

Note

Suitable for hydraulic punching pumps

Accessories

- Spare bolt with nut → below

Description	Size		Order No.
	mm	inch	
Square punch 15.8	15.8 x 15.8	0.62 x 0.62	2623-0915-80-00

Accessories

Spare bolt with nut



Order No.
2623-0710-10-00

Punches

Square punch 22.2 / 25.4



Features

- For the punching of cut-outs in sheet metal.
- Simple operation to get desired cut-outs in sheet metal.
- Fast, clean, shaving-, and burr-free.

Technical Data

- Screw housing \varnothing : 9.5 mm; 0.37"
- Pre-drill \varnothing : 16 mm; 0.63"
- Sheet metal thickness: 2 mm; 14 ga

Scope of Delivery

- Punch complete with stamp, die, bolt and nut

Note

Suitable for hydraulic punching pumps

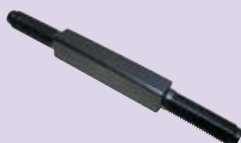
Accessories

- Spare bolt → below
- Spare nut → below

Description	Size		Order No.
	mm	inch	
Square punch 22.2	22.2 x 22.2	0.87 x 0.87	2623-0922-20-00
Square punch 25.4	25.4 x 25.4	1 x 1	2623-0925-40-00

Accessories

Spare bolt



Order No.

2623-0712-11-00

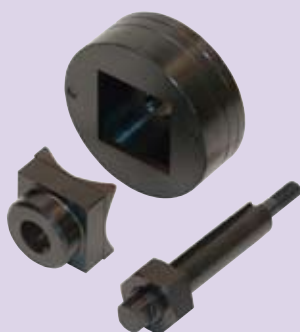
Spare nut



Order No.

2683-0710-10-02

Square punch 46



Features

- For punching cut-outs in sheet metal.
- Simple operation to get desired cut-outs in sheet metal.
- Fast, clean, shaving-, and burr-free.

Technical Data

- Screw housing \varnothing : 9.5 mm; 0.37"
- Pre-drill \varnothing : 20 mm; 0.79"
- Sheet metal thickness: 2 mm; 14 ga

Scope of Delivery

- Punch complete with stamp, die, bolt and nut

Note

Suitable for hydraulic punching pumps

Accessories

- Spare bolt with nut → below

Description	Order No.
Square punch 46	2623-0946-00-00

Accessories

Spare bolt with nut



Order No.

2623-0119-00-00

Square punch 45/46/68/92



Features

- For punching cut-outs in sheet metal.
- Simple operation to get desired cut-outs in sheet metal.
- Fast, clean, shaving- and burr-free.

Technical Data

- Screw housing Ø: 19 mm; 0.75"
- Pre-drill Ø: 27 mm; 1.06"
- Sheet metal thickness: 3 mm; 11 ga

Scope of Delivery

- Punch complete with stamp, die, bolt and nut

Note

Suitable for hydraulic punches.
Redesign of punches in sizes 68 and 92 mm: effortless waste removal.

Accessories

- Spare bolt → below
- Spare nut¹⁾ → below
- Spare nut for square punch 92¹⁾ → below

¹⁾ Not for all Products

Description	Size		Order No.
	mm	inch	
Square punch 45	45	1.77	2683-0945-00-00
Square punch 46	46	1.81	2683-0946-00-00
Square punch 68	68	2.68	2683-0968-00-01
Square punch 92	92	3.62	2683-0992-00-01

Accessories

Spare bolt



Order No.

2683-0719-24-00

Spare nut



suitable for

2683-0945-00-00
2683-0946-00-00
2683-0968-00-01

Order No.

2683-0719-19-01

Spare nut for square punch 92



Description

Outer diameter: 75 mm
Height: 15 mm
Thread Ø: 19 mm

suitable for

2683-0992-02-01

Order No.

2683-0992-03-01

Punches

Rectangular punch 22x30



Features

- For punching cut-outs in sheet metal.
- Simple operation to get desired cut-outs in sheet metal.
- Fast, clean, shaving-, and burr-free.

Technical Data

- Dimensions: 22 x 30 mm
- Screw housing \varnothing : 9.5 mm; 0.37"
- Pre-drill \varnothing : 16 mm; 0.63"
- Sheet metal thickness: 1.5 mm; 16 ga

Scope of Delivery

- Punch complete with stamp, die, bolt and nut

Note

Suitable for hydraulic punching pumps

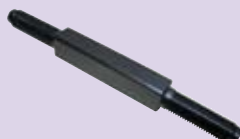
Accessories

- Spare bolt → below
- Spare nut → below

Description	Order No.
Rectangular punch 22x30	2683-0922-31-10

Accessories

Spare bolt



Order No.
2623-0712-11-00

Spare nut



Order No.
2683-0710-10-02

Rectangular punch 22x42



Features

- For the punching of cut-outs in sheet metal.
- Simple operation to get desired cut-outs in sheet metal.
- Fast, clean, shaving-, and burr-free.

Technical Data

- Dimensions: 22 x 42 mm
- Screw housing \varnothing : 9.5 mm; 0.37"
- Pre-drill \varnothing : 16 mm; 0.63"
- Sheet metal thickness: 1.5 mm; 16 ga

Scope of Delivery

- Punch complete with stamp, die, bolt and nut

Note

Suitable for hydraulic punching pumps

Accessories

- Spare bolt with nut → below

Description	Order No.
Rectangular punch 22x42	2683-0922-42-10

Accessories

Spare bolt with nut



Order No.
2623-0712-12-00

Rectangular punch 25x50



Features

- For punching cut-outs in sheet metal.
- Simple operation to get desired cut-outs in sheet metal.
- Fast, clean, shaving-, and burr-free.

Technical Data

- Dimensions: 25 x 50 mm
- Screw housing \varnothing : 19 mm; 0.75"
- Pre-drill \varnothing : 25 mm; 0.98"
- Sheet steel thickness: 2 mm; 14 ga

Scope of Delivery

- Punch complete with stamp, die, bolt and nut

Note

Suitable for hydraulic punching pumps

Accessories

- Spare bolt → below
- Spare nut → below

Description	Order No.
Rectangular punch 25x50	2683-0925-50-00

Accessories

Spare bolt



Order No.

2623-0118-00-00

Spare nut



Order No.

2683-0719-19-01

Rectangular punch 46x92



Features

- For punching cut-outs in sheet metal.
- Simple operation to get desired cut-outs in sheet metal.
- Fast, clean, shaving-, and burr-free.

Technical Data

- Dimensions: 46 x 92 mm
- Screw housing \varnothing : 19 mm; 0.75"
- Pre-drill \varnothing : 27 mm; 1.06"
- Sheet metal thickness: 3 mm; 11 ga

Scope of Delivery

- Punch complete with stamp, die, bolt and nut

Note

Suitable for hydraulic punching pumps

Accessories

- Spare bolt → below
- Spare nut → below

Description	Order No.
Rectangular punch 46x92	2683-0946-92-00

Accessories

Spare bolt



Order No.

2683-0719-24-15

Spare nut



Order No.

2683-0719-19-01

Punches

Rectangular punch for heavy duty connectors



Features

- For punching cut-outs in sheet metal.
- Simple operation to get desired cut-outs in sheet metal.
- Fast, clean, shaving-, and burr-free.

Technical Data

- Dimensions: 36 x 52 mm
- Screw housing Ø: 19 mm; 0.75"
- Pre-drill Ø: 27 mm; 1.06"
- Sheet metal thickness: 3mm; 11ga

Scope of Delivery

- Punch complete with stamp, die, bolt and nut

Note

Suitable for hydraulic punching pumps

Accessories

- Spare bolt → below
- Spare nut → below
- Drilling jig for heavy duty connectors → below

Description	Size		No. of pins	Order No.
	mm	inch		
Rectangular punch 36x52	36 x 52	1.42 x 2.05	6	2683-0936-52-00
Rectangular punch 36x65	36 x 65	1.42 x 2.56	10	2683-0936-65-00
Rectangular punch 36x85.5	36 x 85.5	1.42 x 3.37	16	2683-0936-85-50
Rectangular punch 36x112	36 x 112	1.42 x 4.41	24	2683-0936-11-20

Accessories

Spare bolt



Order No.

2683-0719-24-15

Spare nut



Order No.

2683-0719-19-01

Drilling jig for heavy duty connectors



Features

- For drilling the 4 mounting holes with Ø 4.3 mm, after punching the cut-out for the terminal adapter.

Technical Data

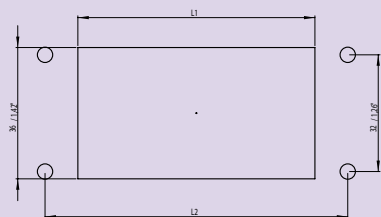
Further technical information → page 27

Scope of Delivery

- 1 piece

Description	No. of pins	L 1		L 2		Order No.
		mm	inch	mm	inch	
Drilling jig for heavy duty connectors with 6 pins	6	52	2.05	70	2.76	2683-0906-52-04
Drilling jig for heavy duty connectors with 10 pins	10	65	2.56	83	3.27	2683-0910-65-04
Drilling jig for heavy duty connectors with 16 pins	16	85.5	3.37	103	4.06	2683-0916-85-54
Drilling jig for heavy duty connectors with 24 pins	24	112	4.41	130	5.12	2683-0924-11-24

Technical Information



Formed punch for MinD



Features

- For punching cut-outs in sheet metal.
- Simple operation to get desired cut-outs in sheet metal.
- Fast, clean, shaving- and burr-free.

Product Description

For the punching of cut-outs for multipoint connectors MinD.
For hydraulic operation.

Technical Data

- Maximum sheet metal thickness:
- Sheet steel ST 37: 1.75 mm

- Stainless steel: 1 mm
 - Aluminium: 2 mm
 - Pre-drill \varnothing : 10.5 mm; 0.41"
 - Screw housing \varnothing : 9.5 mm; 0.37"
- Further technical information → below

Scope of Delivery

- Punch complete with stamp, die, bolt and nut

Accessories

- Spare bolt → below
- Spare nut → below

Description	No. of pins	Hole size		Order No.
		mm	mm	
Formed punch for MinD	9	19.8 x 11.3	0.78 x 0.44	2683-0000-00-09
Formed punch for MinD	15	28.2 x 11.3	1.11 x 0.44	2683-0000-00-15
Formed punch for MinD	25	41.9 x 11.3	1.65 x 0.44	2683-0000-00-25
Formed punch for MinD	37	58.4 x 11.3	2.3 x 0.44	2683-0000-00-37

Accessories

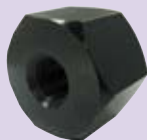
Spare bolt



Order No.

2683-0000-38-38

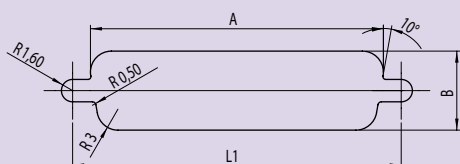
Spare nut



Order No.

2683-0000-00-38

Technical Information



L1 hole spacing for:

9-pin connector	25 mm
15-pin connector	33.3 mm
25-pin connector	47 mm
37-pin connector	63.5 mm
50-pin connector	61 mm

Punches

Formed punch for MinD



Features

- For punching cut-outs in sheet metal.
- Simple operation to get desired cut-outs in sheet metal.
- Fast, clean, shaving- and burr-free.

Product Description

For the punching of cut-outs for multipoint connectors MinD. Optionally with hydraulic or wrench operation.

- 50-pins with mounting holes

Technical Data

- Punch size: 55.7 x 13.9 mm

- Maximum sheet metal thickness:

- Sheet steel ST 37: 1.75 mm
- Stainless steel: 1.0 mm
- Aluminium: 2.0 mm
- Pre-drill Ø: 12.5 mm; 0.49"
- Screw housing Ø: 9.5 mm; 0.37"

Scope of Delivery

- Punch complete with stamp, die, bolt and nut

Accessories

- Spare bolt → below
- Spare nut → below

Description	Order No.
Formed punch for MinD 55.7 x 13.9	2683-0000-00-50

Accessories

Spare bolt



Order No.

2683-0000-38-12

Spare nut



Order No.

2683-0000-00-12

Turn lock formed punch



Features

- For punching turn lock cut-outs in sheet metal.
- Simple operation to get desired cut-outs in sheet metal.
- Fast, clean, shaving- and burr-free.

Product Description

For sash lock and turn lock cut-outs. Hydraulic operation.

Technical Data

- Maximum sheet metal thickness:

- Sheet steel: 2.0 mm
- Stainless steel: 2.0 mm
- Aluminium: 3.0 mm
- Screw housing Ø: 9.5 mm; 0.37"
- Pre-drill Ø: 16 mm; 0.63"

Further technical information → below

Scope of Delivery

- Punch complete with stamp, die, bolt and nut

Accessories

- Spare bolt with nut → below

Description	Order No.
Turn lock formed punch 20.1 x 22.5	2683-0920-22-01
Turn lock formed punch 20.2 x 23.1	2683-0920-23-01

Accessories

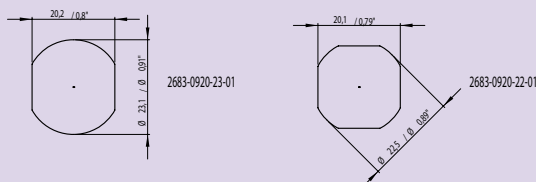
Spare bolt with nut



Order No.

2623-0712-12-00

Technical Information



High performance cutting oil



Product Description

- In plastic bottle with nozzle
- Facilitates punching tool operation
- Reduces power force
- Increases service life

- Can also be used for thread lubrication of square actuation screws
- Skin-friendly, odourless

Scope of Delivery

- 1 plastic bottle, 0.25 l

Description	Order No.
High performance cutting oil	2684-0700-25-00

Accessories

Actuation screw



Product Description

Used when punching round holes in conjunction with punches.
The function of the actuating screw is to transfer the force of the cylinder punch to the stamp.
Through the axial movement of the punch cylinders, the punch die cuts the metal.
Actuation screw \varnothing 11.1 mm, only usable with Round punch Plus.

Technical Data

Further technical information → below

Scope of Delivery

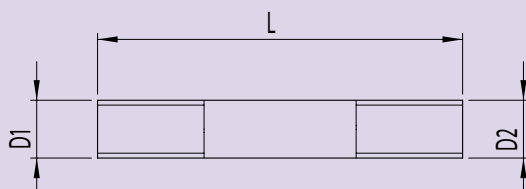
- 1 piece

Note

Actuation screws differ in length and size through the different screw entries of punches and the mountable punch set. See page 81.

Description	D1		D2		Length		suitable for	Order No.
	mm	inch	mm	inch	mm	inch		
Actuation screw	6.3	0.25	9.5	0.37	82	3.23	Powerman Compact and Powerman Junior	2623-0706-30-00
	9.5	0.37	9.5	0.37	87	3.43	Powerman Vario without punches, Powerman Vario with punch kit and Powerlec Vario	2624-0710-00-00
	9.5	0.37	9.5	0.37	72	2.83	Powerman, Powerman Step and Hydraulic cylinder 19	2683-0710-00-00
	9.5	0.37	9.5	0.37	100	3.94	Powerman Compact, Powerman Junior without punches, Powerman Junior with round punches and Hydraulic cylinder 9.5	2623-0710-00-00
	11.1	0.44	9.5	0.37	95	3.74	Powerman Compact, Powerman Junior without punches, Powerman Junior with round punches and Hydraulic cylinder 9.5	2621-0711-10-00
	19	0.75	9.5	0.37	130	5.12	Powerman Compact and Hydraulic cylinder 9.5	2623-0719-00-00
	11.1	0.44	19	0.75	100	3.94	Powerman Vario without punches, Powerman Vario with punch kit, Powerlec Vario and Powerman Step	2624-0711-19-00
	11.1	0.44	19	0.75	112	4.41	Powerman and Hydraulic cylinder 19	2684-0711-19-00
	19	0.75	19	0.75	120	4.72	Powerman Vario without punches, Powerman Vario with punch kit and Powerlec Vario	2624-0719-00-00
	19	0.75	19	0.75	135	5.31	Powerman, Powerman Step and Hydraulic cylinder 19	2683-0719-00-00

Technical Information



Spacer sleeve set



Features

- To compensate for length differences of punching tools.

Technical Data

- ID: 19.5 mm; 0.77"

Scope of Delivery

- 1 set

Suitable for

Powerman, Powerman Step and Hydraulic cylinder 19

Description	Order No.
Spacer sleeve set	2684-7336-01-00

Spacer sleeve



Features

- To compensate for length differences of punching tools.

Scope of Delivery

- 1 piece

Description	D1		D2		Length		suitable for	Order No.
	mm	inch	mm	inch	mm	inch		
Spacer sleeve	10	0.39	35	1.38	8	0.31	Powerman Vario without punches, Powerman Vario with punch kit	2624-0710-08-00
	19.5	0.77	35	1.38	10	0.39	Powerman Vario without punches, Powerman Vario with punch kit and Powerlec Vario	2624-0510-19-00
	19.5	0.77	36	1.42	18	0.71	Powerman Junior without punches, Powerman Junior with round punches, Powerman Vario without punches and Powerman Vario with punch kit	2622-0719-03-00

Round punch with step die



Product Description

To mount stamp, a machine specific adapter is required.

Suitable for

Quick-Press 300, Quick-Press 400 and Maxi-Press 500 (900)

Scope of Delivery

- Punch consisting of stamp and die

Description	Size		Metrical	Die diameter		Order No.
	mm	inch		mm	inch	
Round punch with step die	50.5	1.99	M 50 x 1.5	50	1.97	2661-0250-50-00
	63.5	2.5	M 63 x 1.5	50	1.97	2661-0263-50-00

Technical Information

