



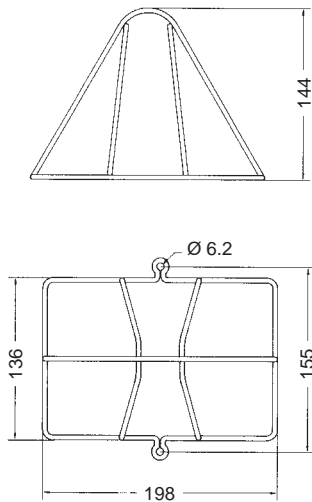
## Protective cages

For protection against large mechanical demands. A very useful accessory for visual signaling devices fitted to vehicles, such as fork lift trucks or driverless transport vehicles.

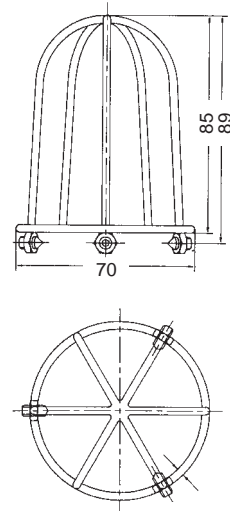
Mechanical data	
Material	steel, powder-coated
Colour	white, similar to RAL 9016

### Dimensions

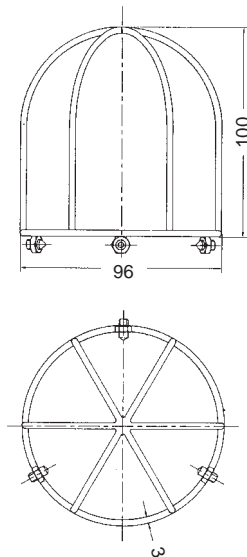
#### for PB- / PD series



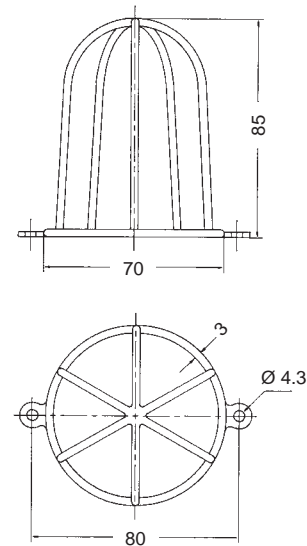
#### for WBL/WBS, DWBL/DWBS



#### for ABL/ABL, KBL, WB-M, KDL



#### for WBLR/WBSR



### Ordering details

suitable for ...	Weight	Article number
PB-/PD series	165 g	287 10 50 0 040
WBL/WBS, DWBL/DWBS	55 g	287 10 50 0 041
ABL/ABS, WBL-M/WBS-M, KBL, KDL	65 g	287 10 50 0 042
WBLR/WBSR	52 g	287 10 50 0 043