

# LR Box

3.3kV

The LR Box is designed to allow supply cable to enter and exit at 90° from each other.

Supplied complete with three glands plates, its unique design can be modified by the installer to allow either left hand or right hand cable connections.

- Configure to suit installation orientation on site
- Overload current 1845A for 10 seconds
- Suitable for extreme low temperature applications
- DTS-01 deluge tested enclosure



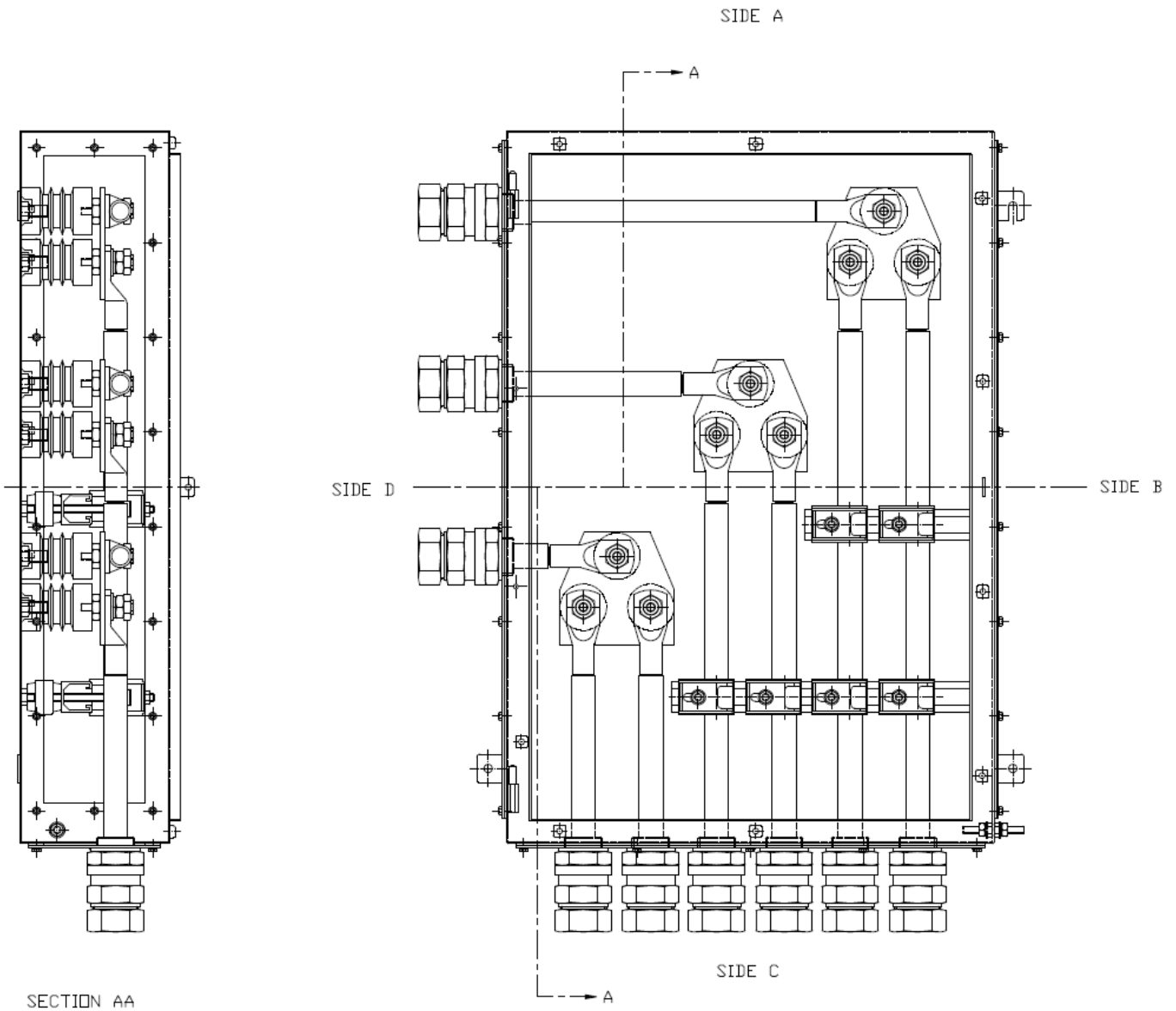
## Enclosure Ratings

Product Reference	Width X (mm)	Height Y (mm)	Depth Z (mm)	Maximum Voltage (kV)	Maximum Current (A)	Maximum Conductor Size (mm <sup>2</sup> )	Phase	Weight (kg)
LR52 LH	510	510	220	3.3	1250	240	1	30
LR52 RH	510	510	220	3.3	1250	240	1	30
LR73 LH	650	950	220	3.3	1250	240	3	50
LR73 RH	650	950	220	3.3	1250	240	3	50

## Standard Specifications

Enclosure Type	High Voltage
Ingress Protection	IP66/67 to EN60529, Type 4X, DTS-01
Material	316L Stainless Steel (EN 1.4404) enclosure, silicone gasket and A4 stainless steel fixings
Ambient Temp Rating	-50°C to +55°C (T3) or -50°C to +40°C (T4)
Maximum No. Busbars	3
No. of Gland Plates	3
Crimp lugs	16mm <sup>2</sup> to 240mm <sup>2</sup>
Earthing	Via studs on enclosure, door and gland plates
Mounting	Via 3mm thick external mounting straps, slotted upper strap for ease of installation
<b>Certification</b>	
Area Classification	Zone 1 & 21, Gas and Dust / Class 1 Div 2
Type of Protection	Ex e (Increased Safety), Ex tb (Dust Protected)
Apparatus Coding	Ex e IIC T4, Ex tb IIIC IP66 T65°C Db / Ex e IIC T3, Ex tb IIIC IP66 T80°C Db
Certificate Number	CML 14ATEX3008X / IECEx CML 14.0007X

## Typical Arrangement



## Options

EP	Electro-polished
----	------------------

## Accessories

EABDM2010SS	Breather drain
-------------	----------------