

Round 2 keyway punch



Features

- For punching cut-outs in sheet metal.
- Simple operation to get desired cut-outs in sheet metal.
- Fast, clean, shaving-, and burr-free.

Product Description

For components with anti-rotation feature.
Produces notch grooves in size 3.3 x 2.5 mm (WxD).

Technical Data

- Screw housing \varnothing : 9.5 mm; 0.37"
- Pre-drill \varnothing : 16 mm; 0.63"
- Sheet metal thickness: 2 mm; 14 ga
- Stainless steel thickness: 1.5 mm; 16 ga

Scope of Delivery

- Punch complete with stamp, die, bolt and nut

Note

Suitable for hydraulic punching pumps

Accessories

- Spare bolt with nut → below

Description	Order No.
Round 2 keyway punch	2623-0922-52-00

Accessories

Spare bolt with nut



Order No.
2623-0712-12-00

Square punch 15.8



Features

- For punching cut-outs in sheet metal.
- Simple operation to get desired cut-outs in sheet metal.
- Fast, clean, shaving-, and burr-free.

Technical Data

- Screw housing \varnothing : 9.5 mm; 0.37"
- Pre-drill \varnothing : 13 mm; 0.51"
- Sheet metal thickness: 2 mm; 14 ga

Scope of Delivery

- Punch complete with stamp, die, bolt and nut

Note

Suitable for hydraulic punching pumps

Accessories

- Spare bolt with nut → below

Description	Size		Order No.
	mm	inch	
Square punch 15.8	15.8 x 15.8	0.62 x 0.62	2623-0915-80-00

Accessories

Spare bolt with nut



Order No.
2623-0710-10-00

Punches

Square punch 22.2 / 25.4



Features

- For the punching of cut-outs in sheet metal.
- Simple operation to get desired cut-outs in sheet metal.
- Fast, clean, shaving-, and burr-free.

Technical Data

- Screw housing \varnothing : 9.5 mm; 0.37"
- Pre-drill \varnothing : 16 mm; 0.63"
- Sheet metal thickness: 2 mm; 14 ga

Scope of Delivery

- Punch complete with stamp, die, bolt and nut

Note

Suitable for hydraulic punching pumps

Accessories

- Spare bolt → below
- Spare nut → below

Description	Size		Order No.
	mm	inch	
Square punch 22.2	22.2 x 22.2	0.87 x 0.87	2623-0922-20-00
Square punch 25.4	25.4 x 25.4	1 x 1	2623-0925-40-00

Accessories

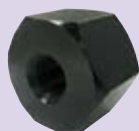
Spare bolt



Order No.

2623-0712-11-00

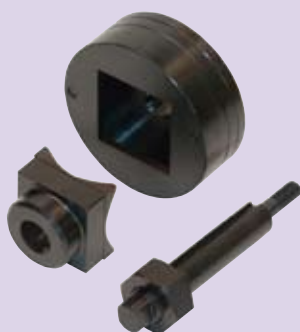
Spare nut



Order No.

2683-0710-10-02

Square punch 46



Features

- For punching cut-outs in sheet metal.
- Simple operation to get desired cut-outs in sheet metal.
- Fast, clean, shaving-, and burr-free.

Technical Data

- Screw housing \varnothing : 9.5 mm; 0.37"
- Pre-drill \varnothing : 20 mm; 0.79"
- Sheet metal thickness: 2 mm; 14 ga

Scope of Delivery

- Punch complete with stamp, die, bolt and nut

Note

Suitable for hydraulic punching pumps

Accessories

- Spare bolt with nut → below

Description	Order No.
Square punch 46	2623-0946-00-00

Accessories

Spare bolt with nut



Order No.

2623-0119-00-00

Square punch 45/46/68/92



Features

- For punching cut-outs in sheet metal.
- Simple operation to get desired cut-outs in sheet metal.
- Fast, clean, shaving- and burr-free.

Technical Data

- Screw housing Ø: 19 mm; 0.75"
- Pre-drill Ø: 27 mm; 1.06"
- Sheet metal thickness: 3 mm; 11 ga

Scope of Delivery

- Punch complete with stamp, die, bolt and nut

Note

Suitable for hydraulic punches.
Redesign of punches in sizes 68 and 92 mm: effortless waste removal.

Accessories

- Spare bolt → below
- Spare nut¹⁾ → below
- Spare nut for square punch 92¹⁾ → below

¹⁾ Not for all Products

Description	Size		Order No.
	mm	inch	
Square punch 45	45	1.77	2683-0945-00-00
Square punch 46	46	1.81	2683-0946-00-00
Square punch 68	68	2.68	2683-0968-00-01
Square punch 92	92	3.62	2683-0992-00-01

Accessories

Spare bolt



Order No.

2683-0719-24-00

Spare nut



suitable for

2683-0945-00-00
2683-0946-00-00
2683-0968-00-01

Order No.

2683-0719-19-01

Spare nut for square punch 92



Description

Outer diameter: 75 mm
Height: 15 mm
Thread Ø: 19 mm

suitable for

2683-0992-02-01

Order No.

2683-0992-03-01

Punches

Rectangular punch 22x30



Features

- For punching cut-outs in sheet metal.
- Simple operation to get desired cut-outs in sheet metal.
- Fast, clean, shaving-, and burr-free.

Technical Data

- Dimensions: 22 x 30 mm
- Screw housing \varnothing : 9.5 mm; 0.37"
- Pre-drill \varnothing : 16 mm; 0.63"
- Sheet metal thickness: 1.5 mm; 16 ga

Scope of Delivery

- Punch complete with stamp, die, bolt and nut

Note

Suitable for hydraulic punching pumps

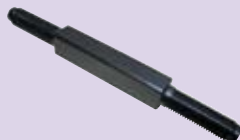
Accessories

- Spare bolt → below
- Spare nut → below

Description	Order No.
Rectangular punch 22x30	2683-0922-31-10

Accessories

Spare bolt



Order No.
2623-0712-11-00

Spare nut



Order No.
2683-0710-10-02

Rectangular punch 22x42



Features

- For the punching of cut-outs in sheet metal.
- Simple operation to get desired cut-outs in sheet metal.
- Fast, clean, shaving-, and burr-free.

Technical Data

- Dimensions: 22 x 42 mm
- Screw housing \varnothing : 9.5 mm; 0.37"
- Pre-drill \varnothing : 16 mm; 0.63"
- Sheet metal thickness: 1.5 mm; 16 ga

Scope of Delivery

- Punch complete with stamp, die, bolt and nut

Note

Suitable for hydraulic punching pumps

Accessories

- Spare bolt with nut → below

Description	Order No.
Rectangular punch 22x42	2683-0922-42-10

Accessories

Spare bolt with nut



Order No.
2623-0712-12-00

Rectangular punch 25x50



Features

- For punching cut-outs in sheet metal.
- Simple operation to get desired cut-outs in sheet metal.
- Fast, clean, shaving-, and burr-free.

Technical Data

- Dimensions: 25 x 50 mm
- Screw housing \varnothing : 19 mm; 0.75"
- Pre-drill \varnothing : 25 mm; 0.98"
- Sheet steel thickness: 2 mm; 14 ga

Scope of Delivery

- Punch complete with stamp, die, bolt and nut

Note

Suitable for hydraulic punching pumps

Accessories

- Spare bolt → below
- Spare nut → below

Description	Order No.
Rectangular punch 25x50	2683-0925-50-00

Accessories

Spare bolt



Order No.

2623-0118-00-00

Spare nut



Order No.

2683-0719-19-01

Rectangular punch 46x92



Features

- For punching cut-outs in sheet metal.
- Simple operation to get desired cut-outs in sheet metal.
- Fast, clean, shaving-, and burr-free.

Technical Data

- Dimensions: 46 x 92 mm
- Screw housing \varnothing : 19 mm; 0.75"
- Pre-drill \varnothing : 27 mm; 1.06"
- Sheet metal thickness: 3 mm; 11 ga

Scope of Delivery

- Punch complete with stamp, die, bolt and nut

Note

Suitable for hydraulic punching pumps

Accessories

- Spare bolt → below
- Spare nut → below

Description	Order No.
Rectangular punch 46x92	2683-0946-92-00

Accessories

Spare bolt



Order No.

2683-0719-24-15

Spare nut



Order No.

2683-0719-19-01

Punches

Rectangular punch for heavy duty connectors



Features

- For punching cut-outs in sheet metal.
- Simple operation to get desired cut-outs in sheet metal.
- Fast, clean, shaving-, and burr-free.

Technical Data

- Dimensions: 36 x 52 mm
- Screw housing Ø: 19 mm; 0.75"
- Pre-drill Ø: 27 mm; 1.06"
- Sheet metal thickness: 3mm; 11ga

Scope of Delivery

- Punch complete with stamp, die, bolt and nut

Note

Suitable for hydraulic punching pumps

Accessories

- Spare bolt → below
- Spare nut → below
- Drilling jig for heavy duty connectors → below

Description	Size		No. of pins	Order No.
	mm	inch		
Rectangular punch 36x52	36 x 52	1.42 x 2.05	6	2683-0936-52-00
Rectangular punch 36x65	36 x 65	1.42 x 2.56	10	2683-0936-65-00
Rectangular punch 36x85.5	36 x 85.5	1.42 x 3.37	16	2683-0936-85-50
Rectangular punch 36x112	36 x 112	1.42 x 4.41	24	2683-0936-11-20

Accessories

Spare bolt



Order No.

2683-0719-24-15

Spare nut



Order No.

2683-0719-19-01

Drilling jig for heavy duty connectors



Features

- For drilling the 4 mounting holes with Ø 4.3 mm, after punching the cut-out for the terminal adapter.

Technical Data

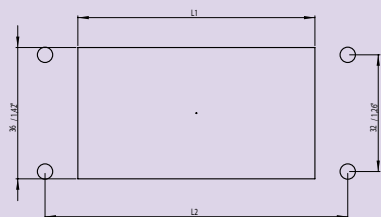
Further technical information → page 27

Scope of Delivery

- 1 piece

Description	No. of pins	L 1		L 2		Order No.
		mm	inch	mm	inch	
Drilling jig for heavy duty connectors with 6 pins	6	52	2.05	70	2.76	2683-0906-52-04
Drilling jig for heavy duty connectors with 10 pins	10	65	2.56	83	3.27	2683-0910-65-04
Drilling jig for heavy duty connectors with 16 pins	16	85.5	3.37	103	4.06	2683-0916-85-54
Drilling jig for heavy duty connectors with 24 pins	24	112	4.41	130	5.12	2683-0924-11-24

Technical Information



Formed punch for MinD



Features

- For punching cut-outs in sheet metal.
- Simple operation to get desired cut-outs in sheet metal.
- Fast, clean, shaving- and burr-free.

Product Description

For the punching of cut-outs for multipoint connectors MinD.
For hydraulic operation.

Technical Data

- Maximum sheet metal thickness:
- Sheet steel ST 37: 1.75 mm

- Stainless steel: 1 mm
 - Aluminium: 2 mm
 - Pre-drill \varnothing : 10.5 mm; 0.41"
 - Screw housing \varnothing : 9.5 mm; 0.37"
- Further technical information → below

Scope of Delivery

- Punch complete with stamp, die, bolt and nut

Accessories

- Spare bolt → below
- Spare nut → below

Description	No. of pins	Hole size		Order No.
		mm	mm	
Formed punch for MinD	9	19.8 x 11.3	0.78 x 0.44	2683-0000-00-09
Formed punch for MinD	15	28.2 x 11.3	1.11 x 0.44	2683-0000-00-15
Formed punch for MinD	25	41.9 x 11.3	1.65 x 0.44	2683-0000-00-25
Formed punch for MinD	37	58.4 x 11.3	2.3 x 0.44	2683-0000-00-37

Accessories

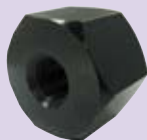
Spare bolt



Order No.

2683-0000-38-38

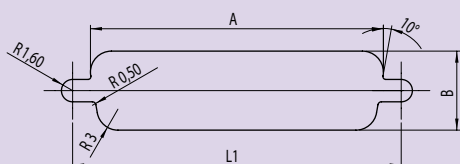
Spare nut



Order No.

2683-0000-00-38

Technical Information



L1 hole spacing for:

- 9-pin connector 25 mm
- 15-pin connector 33.3 mm
- 25-pin connector 47 mm
- 37-pin connector 63.5 mm
- 50-pin connector 61 mm

Punches

Formed punch for MinD



Features

- For punching cut-outs in sheet metal.
- Simple operation to get desired cut-outs in sheet metal.
- Fast, clean, shaving- and burr-free.

Product Description

For the punching of cut-outs for multipoint connectors MinD. Optionally with hydraulic or wrench operation.

- 50-pins with mounting holes

Technical Data

- Punch size: 55.7 x 13.9 mm

- Maximum sheet metal thickness:

- Sheet steel ST 37: 1.75 mm
- Stainless steel: 1.0 mm
- Aluminium: 2.0 mm
- Pre-drill Ø: 12.5 mm; 0.49"
- Screw housing Ø: 9.5 mm; 0.37"

Scope of Delivery

- Punch complete with stamp, die, bolt and nut

Accessories

- Spare bolt → below
- Spare nut → below

Description	Order No.
Formed punch for MinD 55.7 x 13.9	2683-0000-00-50

Accessories

Spare bolt



Order No.

2683-0000-38-12

Spare nut



Order No.

2683-0000-00-12

Turn lock formed punch



Features

- For punching turn lock cut-outs in sheet metal.
- Simple operation to get desired cut-outs in sheet metal.
- Fast, clean, shaving- and burr-free.

Product Description

For sash lock and turn lock cut-outs. Hydraulic operation.

Technical Data

- Maximum sheet metal thickness:

- Sheet steel: 2.0 mm
- Stainless steel: 2.0 mm
- Aluminium: 3.0 mm
- Screw housing Ø: 9.5 mm; 0.37"
- Pre-drill Ø: 16 mm; 0.63"

Further technical information → below

Scope of Delivery

- Punch complete with stamp, die, bolt and nut

Accessories

- Spare bolt with nut → below

Description	Order No.
Turn lock formed punch 20.1 x 22.5	2683-0920-22-01
Turn lock formed punch 20.2 x 23.1	2683-0920-23-01

Accessories

Spare bolt with nut



Order No.

2623-0712-12-00

Technical Information

