

Round punch



Features

- For bolt Ø 3/8"

Product Description

- For operation with wrench or hydraulic pump

Technical Data

- Punch with four cutting edges
- Pilot hole Ø 0.41"

Scope of Delivery

- Punch complete consisting of punch and die

Note

Bolts for manual operation with wrench have to be ordered separately (see below).

Description	size		metrical	PG	thickness sheet steel		Order No.
	mm	inch			mm	ga	
Round punch	12.7	0.5	M 12 x 1.5	PG 7	1.5	16	2623-0812-70-00
	14	0.55			1.5	16	2623-0814-00-00
	15.2	0.6		PG 9	1.5	16	2623-0815-20-00
	16.3	0.64	M 16 x 1.5		2	14	2623-0816-30-00
	17.3	0.68			2	14	2623-0817-30-00
	18.6	0.73	M 18 x 1.5	PG 11	2	14	2623-0818-60-00
	19	0.75			2	14	2623-0819-00-00
	20.4	0.8	M 20 x 1.5	PG 13	3	11	2623-0820-40-00
	21.3	0.84			3	11	2623-0821-30-00
	22.5	0.89		PG 16	3	11	2623-0822-50-00
	23.8	0.94			3	11	2623-0823-80-00
	24.5	0.96			3	11	2623-0824-50-00
	25.4	1	M 25 x 15		3	11	2623-0825-40-00
	27	1.06			2	14	2623-0827-00-00
	28.5	1.12		PG 21	2	14	2623-0828-50-00
	30.5	1.2			2	14	2623-0830-51-00
	33.3	1.31			2	14	2623-0833-30-00
	35	1.38			2	14	2623-0835-01-00
38.1	1.5			2	14	2623-0838-11-00	

Bolts without ball bearing



Product Description

For manual operation with wrench of round punch

Scope of Delivery

- 1 Bolt

Description	size		Order No.
	mm	inch	
Bolts without ball bearing	9,5x50	0.37x1.97	2683-0710-50-00

Puncher

Bolts with ball bearing



Product Description

For manual operation with wrench of round punch

Scope of Delivery

- 1 Bolt

Note

Ball bearing bolts reduce the effort by approx 50%. It is absolutely necessary to use cutting oil when punching

Description	size		Order No.
	mm	inch	
With ball bearing	9,5x50	0.37x1.97	2683-1710-50-00

Bolts without ball bearing



Product Description

For manual operation with wrench of round punch

Scope of Delivery

- 1 Bolt

Description	size		Order No.
	mm	inch	
Bolts without ball bearing	19	0.75	2683-0719-75-00

Bolts with ball bearing



Product Description

For manual operation with wrench of round punch

Scope of Delivery

- 1 Bolt

Description	size		Order No.
	mm	inch	
Bolts with ball bearing	19	0.75	2683-1719-75-00

Round punch



Product Description

For bolt Ø 3/4"

- For operation with wrench or hydraulic pump

Technical Data

- Punch with four cutting edges
- Pre-drilling or pre-punching Ø 0.79" or 0.80"

Scope of Delivery

- 1 punch complete consisting of punch and die

Note

Bolts for manual operation with wrench have to be ordered separately (see page 18).

Description	size		metrical	PG	thickness sheet steel		Order No.
	mm	inch			mm	ga	
	28.3	1.11		PG 21	2	14	2623-0828-30-00
	30.5	1.2	M 30 x 2		3	11	2623-0830-50-00
	32	1.26			3	11	2623-0832-00-00
	32.5	1.28	M 32 x 1.5		3	11	2623-0832-50-00
	34.1	1.34			3	11	2623-0834-10-00
	35.1	1.38			3	11	2623-0835-00-00
	37	1.46	M 36 x 2	PG 29	3	11	2623-0837-00-00
	38	1.5			3	11	2623-0838-00-00
	40.5	1.59	M 40 x 1.5		3	11	2623-0840-50-00
	41.2	1.62			3	11	2623-0841-20-00
	43.3	1.7			3	11	2623-0843-30-00
	47	1.85		PG 36	3	11	2623-0847-00-00
	50.5	1.99	M 50 x 1.5		3	11	2623-0850-50-00
	54	2.13		PG 42	3	11	2623-0854-00-00
	56.5	2.22			3	11	2623-0856-50-00
	60	2.36		PG 48	3	11	2623-0860-00-00
	63.5	2.5	M 63 x 1.5		3	11	2623-0863-50-00
	64.4	2.54			3	11	2623-0864-40-00
	66.6	2.62			3	11	2623-0866-60-00
	70	2.76			2	14	2623-0870-00-00
	76.2	3			2	14	2623-0876-20-00
	80	3.15			2	14	2623-0880-00-00
	82	3.23			2	14	2623-0882-00-00
	88.5	3.48			2	14	2623-0888-50-00
	92	3.62			2	14	2623-0892-00-00
	102	4.02			2	14	2623-0810-20-00
	114.3	4.5			2	14	2623-0811-43-00
	120	4.72			2	14	2623-0812-01-00

Round punch

Puncher

Round punch Plus



Features

- Long life time
- Accurate cut outs

Product Description

- For punching stainless steels VA and sheet steels St. 37
- For operation with hydraulic pumps
- Divided scraps (up to Ø 1.27")
- Die with crossing-marking for exact positioning. The special cutting form reduces the effort by approx. 40% when punching.

This increases the service life time of pumps and bolts.

Scope of Delivery

- 1 punch complete consisting of punch and die

Note

Bolt Ø 7/16" is not included in delivery of hydraulic pumps, must be ordered separately. It is absolutely necessary to use cutting oil when punching.

Description	size		metrical	PG	screw holder		Pre-drill		thickness high-grade-steel		Order No.
	mm	inch			mm	inch	mm	inch	mm	ga	
Round punch Plus	15.2	0.6		PG 9	9.5	0.37	10.5	0.41	1.5	16	2682-0815-20-25
	16.5	0.65	M 16 x 1.5		9.5	0.37	10.5	0.41	2	14	2682-0816-50-25
	18.6	0.73		PG 11	11.1	0.44	12	0.47	2	14	2682-0818-60-25
	20.4	0.8	M 20 x 1.5	PG 13	11.1	0.44	12	0.47	2	14	2682-0820-40-25
	22.5	0.89		PG 16	11.1	0.44	12	0.47	2	14	2682-0822-50-25
	25.5	1	M 25 x 1.5		11.1	0.44	12	0.47	2	14	2682-0825-50-25
	28.5	1.12		PG 21	19	0.75	20.4	0.8	2	14	2682-0828-50-25
	30.5	1.2			19	0.75	20.4	0.8	2.5	12	2682-0830-50-25
	32.5	1.28	M 32 x 1.5		19	0.75	20.4	0.8	2.5	12	2682-0832-50-25
	37	1.46		PG 29	19	0.75	20.4	0.8	2.5	12	2682-0837-00-25
	40.5	1.59	M 40 x 1.5		19	0.75	20.4	0.8	2.5	12	2682-0840-50-25
	47	1.85		PG 36	19	0.75	20.4	0.8	2.5	12	2682-0847-00-25
	50.5	1.99	M 50 x 1.5		19	0.75	20.4	0.8	2.5	12	2682-0850-50-25
	54	2.13		PG 42	19	0.75	20.4	0.8	2.5	12	2682-0854-00-25
	60	2.36		PG 48	19	0.75	20.4	0.8	2.5	12	2682-0860-00-25

Round punch Plus kit, metric Ø 16,5 mm - Ø 50,5 mm



Features

- For operation with hydraulic pump

Product Description

- With round punch 16,5; 20,4; 25,5; 32,5; 40,5; 50,5 mm Ø
- For punching sheet steels St. 37

Scope of Delivery

- 1 set with 6 round punch
- Case foam reinforced

Note

It is absolutely necessary to use cutting oil when punching.

Description	Weight		Order No.
	kg	lbs	
Round punch Plus kit, metric Ø 16,5 mm - Ø 50,5 mm	0.8	1.76	2682-7816-50-25

Round punch kit, metric



Features

- For operation with hydraulic pump

Product Description

- With round punch 12,7; 16,3; 20,4; 25,4; 32,5; 40,5; 50,5 mm Ø
- The bolts Ø 3/8" an Ø 3/4" are needed

Scope of Delivery

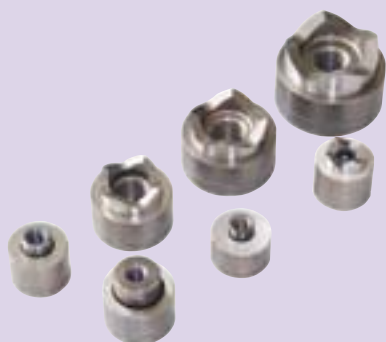
- 1 set with 7 round punch
- Case foam reinforced

Note

It is absolutely necessary to use cutting oil when punching.

Description	Weight		Order No.
	kg	lbs	
Round punch kit, metric with bolts	3	6.62	2683-7812-50-20
Round punch kit, metric without bolts	2,8	6.34	2623-7812-50-00

Round punch kit, PG 7 - PG 21



Features

- For operation with hydraulic pump

Product Description

- With round punch 12,7; 15,2; 18,6; 20,4; 22,5; 28,5; 30,5 mm Ø
- That means PG 9, 11, 13, 16, 21 and Ø 30,5
- The bolts Ø 3/8" and Ø 3/4" are needed

Scope of Delivery

- 1 set with 7 round punch
- Case foam reinforced

Note

It is absolutely necessary to use cutting oil when punching.

Description	Weight		Order No.
	kg	lbs	
Round punch kit, PG7 - PG21 without bolts	0.8	1.76	2623-7812-30-00
Round punch kit, PG7 - PG21 without bolts	1	2.2	2683-7812-30-20

Puncher

Round punch kit, PG 7 - PG 48



Features

- For manual operation with hydraulic pumps.

Product Description

- With round punch Ø 12,7; 15,2; 18,6; 20,4; 22,5; 28,5; 37,0; 47,0; 54,0; 60,0 mm
- That means PG 7, 11, 13, 16, 21, 29, 36, 42, 48
- The bolts Ø 3/8" and Ø 3/4" are needed

Scope of Delivery

- 1 set with 10 round punch
- Case with foam reinforced

Note

It is absolutely necessary to use cutting oil when punching.

Description	Weight		Order No.
	kg	lbs	
Round punch kit, PG7 - PG48 without bolts	2.8	6.17	2623-7812-60-00
Round punch kit, PG7 - PG48 with bolts	3	6.62	2683-7812-60-30

Square punch 15,8



Features

- For hydraulic operation

Technical Data

- screw holder: 9.5 mm; 3/8" inch
- Pre-drill: 13 mm; 0.51 inch
- thickness sheet steel: 1.5 mm; 16 ga

Scope of Delivery

- Punch complete with punch, die, bolt and nut

Note

Suitable for hydraulic pumps

Accessories

- Replacement bolt and screw → below

Description	size		Order No.
	mm	inch	
Square punch 15,8	15.8 x 15.8	0.62 x 0.62	2623-0915-80-00

Accessories

Replacement bolt and screw



Order No.
2623-0710-10-00

Square punch 22,2 / 25,4



Features

- For hydraulic operation

Technical Data

- screw holder: 9.5 mm; 3/8"
- Pre-drill: 16 mm; 0.63 inch
- thickness sheet steel: 2 mm; 14 ga

Scope of Delivery

- Punch complete with punch, die, bolt and nut

Note

Suitable for hydraulic pumps

Accessories

- Replacement bolts → below
- Replacement screw → below

Description	size		Order No.
	mm	inch	
Square punch 22.2 mm	22 x 22	0.87 x 0.87	2623-0922-20-00
Square punch 25.4 mm	25.4 x 25.4	1 x 1	2623-0925-40-00

Accessories

Replacement bolts

Order No.

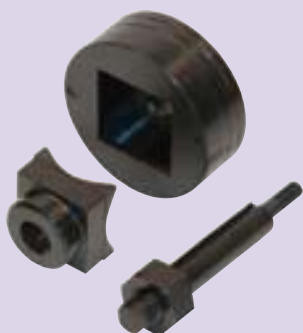
2623-0712-11-00

Replacement screw

Order No.

2683-0710-10-02

Square punch 46x46



Features

- For hydraulic operation

Technical Data

- screw holder: 9.5 mm; 3/8" inch
- Pre-drill: 20 mm; 0.79 inch
- thickness sheet steel: 2 mm; 14 ga

Scope of Delivery

- Punch complete with punch, die, bolt and nut

Note

Suitable for hydraulic pumps

Accessories

- Replacement bolt and screw → below

Description	size		Order No.
	mm	inch	
Square punch 46x46	46 x 46	1.81 x 1.81	2623-0946-00-00

Accessories

Replacement bolt and screw

Order No.

2623-0119-00-00

Puncher

Square punch 45/46/68/92



Features

- For hydraulic operation

Technical Data

- screw holder: 19 mm; 3/4"
- Pre-drill: 27 mm; 1.06 inch
- thickness sheet steel: 3 mm; 11 ga

Scope of Delivery

- Punch complete with punch, die, bolt and nut

Note

Suitable for hydraulic pumps

Accessories

- Replacement bolts → below
- Replacement screw → below

Description	size		Order No.
	mm	inch	
Square punch 45 mm	45 x 45	1.77 x 1.77	2683-0945-00-00
Square punch 46 mm	46 x 46	1.81 x 1.81	2683-0946-00-00
Square punch 68 mm	68 x 68	2.68 x 2.68	2683-0968-00-00
Square punch 92 mm	92 x 92	3.62 x 3.62	2683-0992-02-00

Accessories

Replacement bolts

Order No.
2683-0719-24-00

Replacement screw



Order No.
2683-0719-19-01

Rectangular punch 22x30



Features

- For hydraulic operation

Technical Data

- Dimensions: 22,0x30,0 mm
- screw holder: 9.5 mm; 3/8"
- Pre-drill: 16 mm; 0.63 inch
- thickness sheet steel: 1.5 mm; 16 ga

Scope of Delivery

- Punch complete with punch, die, bolt and nut

Note

Suitable for hydraulic pumps

Accessories

- Replacement bolts → page 25
- Replacement screw → page 25

Description	Order No.
Rectangular punch 22x30 mm	2683-0922-31-10

Accessories

Replacement bolts

Order No.
2623-0712-11-00

Replacement screw

Order No.
2683-0710-10-02

Rectangular punch 22x42



Features

- For hydraulic operation

Technical Data

- Dimensions: 22,0x42,0 mm
- screw holder: 9.5 mm; 3/8"
- Pre-drill: 16 mm; 0.63 inch
- thickness sheet steel: 1.5 mm; 16 ga

Scope of Delivery

- Punch complete with punch, die, bolt and nut

Note

Suitable for hydraulic pumps

Accessories

- Replacement bolt and screw → below

Description	Order No.
Rectangular punch 22x42 mm	2683-0922-42-10

Accessories

Replacement bolt and screw

Order No.
2623-0712-12-00

Rectangular punch 25x50



Features

- For hydraulic operation

Technical Data

- Dimensions: 25,0x50,0 mm
- screw holder: 19 mm; 3/4"
- Pre-drill: 25 mm; 0.98 inch
- thickness sheet steel: 2 mm; 14 ga

Scope of Delivery

- Punch complete with punch, die, bolt and nut

Note

Suitable for hydraulic pumps

Accessories

- Replacement bolts → below

Description	Order No.
Rectangular punch 25x50	2683-0925-50-00

Accessories

Replacement bolts

Order No.
2623-0118-00-00

Puncher

Rectangular punch 46x92



Features

- For hydraulic operation

Technical Data

- Dimensions: 46,0x92,0 mm
- screw holder: 19 mm; 3/4"
- Pre-drill: 27 mm; 1.06 inch
- thickness sheet steel: 3 mm; 11 ga

Scope of Delivery

- Punch complete with punch, die, bolt and nut

Note

Suitable for hydraulic pumps

Accessories

- Replacement bolts → below
- Replacement screw → below

Description	Order No.
Rectangular punch 46x92	2683-0946-92-00

Accessories

Replacement bolts

Order No.
2683-0719-24-15

Replacement screw



Order No.
2683-0719-19-01

Rectangular punch for heavy connectors



Features

- For hydraulic operation

Technical Data

- Dimensions: 36,0x52,0 mm
- screw holder: 19 mm; 3/4"
- Pre-drill: 27 mm; 1.06 inch
- thickness sheet steel: 3 mm; 11 ga

Scope of Delivery

- Punch complete with punch, die, bolt and nut

Note

Suitable for hydraulic pumps

Accessories

- Replacement bolts → page 27
- Replacement screw → page 27

Description	size		number of poles	Order No.
	mm	inch		
Rectangular punch 36x52	36 x 52	1.42 x 2.05	6	2683-0936-52-00
Rectangular punch 36x65	36 x 65	1.42 x 2.56	10	2683-0936-65-00
Rectangular punch 36x85,5	36 x 85.5	1.42 x 3.37	16	2683-0936-85-50
Rectangular punch 36x112	36 x 112	1.42 x 4.41	24	2683-0936-11-20

Accessories

Replacement bolts

Order No.
2683-0719-24-15

Replacement screw



Order No.
2683-0719-19-01

Drilling template for heavy connectors



Product Description

For drilling the 4 attachment holes 0,17" after having punched the cut-out for pin clamp adaptors

Scope of Delivery

• 1 piece

Technical Data

Further technical information → below

Description	number of poles	L1		L2		Order No.
		mm	inch	mm	inch	
Drilling template	6	52	2.05	70	2.76	2683-0906-52-04
	10	65	2.56	83	3.27	2683-0910-65-04
	16	85.5	3.37	103	4.06	2683-0916-85-54
	24	112	4.41	130	5.12	2683-0924-11-24

Technical Information



Puncher

Shaped punch for MinD



Product Description

For punching cut-outs for multipoint connectors „Min D“. For hydraulic operation.

Technical Data

- Max. sheet metal thickness:
- Sheet steel ST 37: 15 ga
- Stainless steel: 18 ga
- Aluminum: 14 ga

Further technical information → below

Scope of Delivery

- Punch complete with punch, die, bolt and nut

Accessories

- Replacement bolts → below
- Replacement screw → below

Description	number of poles	hole size A x B		Order No.
		mm	inch	
Shaped punch 19.8 x 11.3	9	19.8 x 11.3	0.78 x 0.44	2683-0000-00-09
Shaped punch 28.2 x 11.3	15	28.2 x 11.3	1.11 x 0.44	2683-0000-00-15
Shaped punch 41.9 x 11.3	25	41.9 x 11.3	1.65 x 0.44	2683-0000-00-25
Shaped punch 58.4 x 11.3	37	58.4 x 11.3	2.3 x 0.44	2683-0000-00-37

Accessories

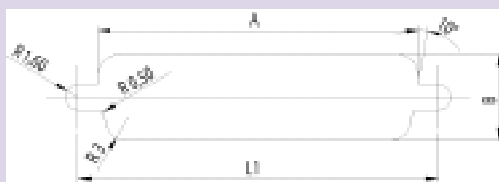
Replacement bolts

Order No.
2683-0000-38-38

Replacement screw

Order No.
2683-0000-00-38

Technical Information



hole center distance L1 for:

9-poles plug	25 mm
15-poles plug	33,3 mm
25-poles plug	47 mm
37-poles plug	63,5 mm
50-poles plug	61 mm

Shaped punch for MinD



Product Description

For punching cut-outs for multipoint connectors „Min D“. For hydraulic or manual operation with wrench.

- 50-pins with attachment holes

Technical Data

- Hole size: 2.19"x0.55"
- Max. sheet metal thickness:
- Sheet steel ST 37: 15 ga

- Stainless steel: 18 ga
- Aluminum: 14 ga

Scope of Delivery

- Punch complete with punch, die, bolt and nut

Accessories

- Replacement bolts → page 29
- Replacement screw → page 29

Description	Order No.
Shaped punch 55,7x13,9	2683-0000-00-50

Accessories

Replacement bolts

Order No.
2683-0000-38-12

Replacement screw

Order No.
2683-0000-00-12

Shaped punch Casement fasteners



Product Description

For punching latch lock and casement lock cut-outs
Hydraulic operation

Technical Data

- screw holder: 9.5 mm; 3/8"

Further technical information → below

Scope of Delivery

- Punch complete

Accessories

- Replacement bolt and screw → below

Description	Order No.
Shaped punch 20,1x22,5	2683-0920-22-01
Shaped punch 20,2x23,1	2683-0920-23-01

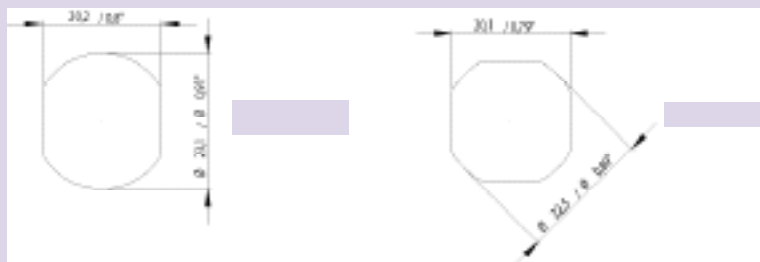
Accessories

Replacement bolt and screw



Order No.
2623-0712-12-00

Technical Information



2683-0920-23-01

2683-0920-22-01