

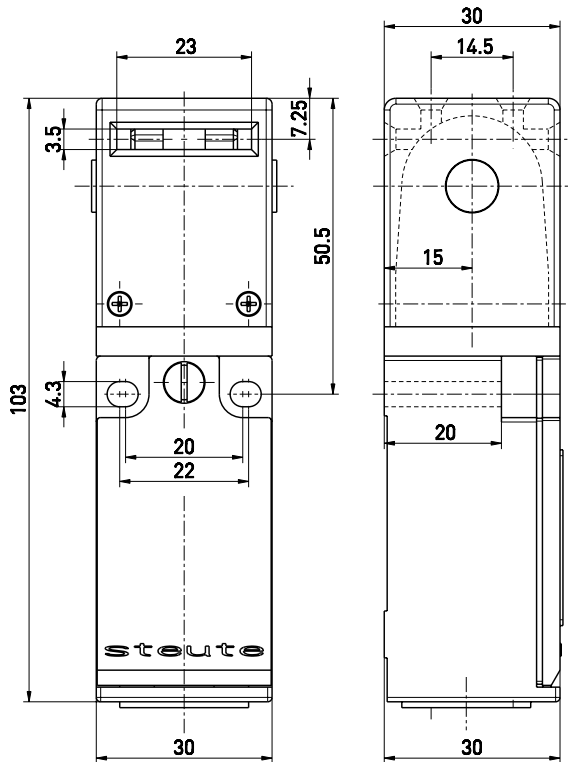
Safety switch with separate actuator // ES 95 AZ 20 Order no.: 95566001

Features/Options


- Thermoplastic enclosure
- Double insulated
- Slow action \ominus , change-over contact with double break

- Wiring compartment
- Mounting details to EN 50 047
- Transversely slotted mounting holes

Dimensions

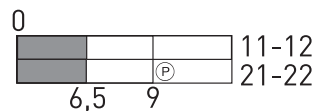


Technical data

Standards	EN ISO 13849-1; IEC/EN 60947-5-1; EN 1088
Enclosure	glass-fibre reinforced, shock-proof thermoplastic, self-extinguishing UL 94-V0
Degree of protection	IP 67 to IEC/EN 60529
Contact material	silver
Switching system	slow action, positive break NC contact \ominus
Switching elements	2 NC contacts with double break, galvanically separated contact bridges
Connection	M3 screw terminals
Cable section	max. 1.5 mm ² (incl. conductor ferrules)
Cable entry	1 x M20 x 1.5
B_{10d} (10% Load)	2 million
T_M	max. 20 years
U_{imp}	4 kV
U_i	250 V
I_{the}	6 A
I_e/U_e	6 A/400 VAC
Utilisation category	AC-15, DC-13
Max. fuse rating	6 A gL/gG D-fuse
Positive break travel	9 mm
Ambient temperature	-20 °C ... +80 °C
Mechanical life	> 1 million operations
Approvals	
Weight	85g

Switching diagram

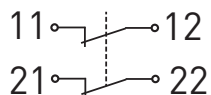
Slow action
2 NC contacts



Note

Inserted position of actuator = 0 in switching diagram.
The actuator is not included with the switches.

Contact diagram



Errors and omissions excepted.