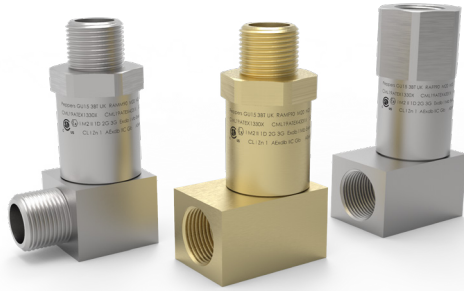




PRODUCT TYPE RA**90

Metallic 90 Degree Rotating Adaptors and Reducers

Ex db : Ex eb : Ex nR : Ex ta : IP66 : IP68 Class I Zone 1 AEx db : AEx eb : AEx ta



PART NUMBERS:

RA	MF90	O	B	F
	MM90		S	
	FF90			



PRODUCT DESCRIPTION

"RA**90" Series Dual Certified Right Angled Rotating Adaptors are designed to protect cables when installed in confined spaces where the cable may otherwise be subject to excessive bending and / or stress. The series is available with Male/Male, Male/Female or Female/Female connection threads. Approved for use in mining and surface applications, they maintain IP66 & IP68 for IEC type applications and Class 1 Zone 1 and Type 4X/6P for CEC / NEC type applications.

COMPLIANCE STANDARDS:

EN 60079-0, EN 60079-1, EN 60079-7, EN 60079-15, EN 60079-31
IEC 60079-0, IEC 60079-1, IEC 60079-7, IEC 60079-15, IEC 60079-31 & IEC 60529
C22.2 (see certificate), ANSI/UL 514B, ANSI/UL 60079-0/1/7, ANSI/ISA 60079-31, UL50E

EXAMPLE PART NUMBERING:
RAMF90BFF/NP/M20/M20

RA	Rotating Thread converting Adaptor/Reducer
MF90	Male / Female (MF90) - Male / Male (MM90) - Female/Female (FF90)
O	No IP O-ring
B	Brass (B) - Stainless Steel (S)
F	Multiple Certification
K-V-H	Locknut & Nylon (K) - Fibre (V) - PTFE (H) IP Washer
S	Including Serrated Washer
1	Quantity per kit
NP	Nickel Plated
M20	Male Entry Thread
M20	Female Entry Thread

OPTIONAL ACCESSORIES:

IP Washers	(N) Nylon (ACNSW) - (J) Fibre (ACFSW) - (Z) PTFE (ACPSW)
Earth Tag	(T) Brass (ACBET) - St-Steel (ACSET)
Locknut	(L) Brass (ACBLN) - St-Steel (ACSLN)
Serrated Washer	(S) Stainless Steel (ACSSW)

CERTIFICATION:

ATEX	I M2 II 1D 2G Ex db I Mb / Ex db IIC Gb / Ex eb I Mb / Ex eb IIC Gb / Ex ta IIIC Da II 3G Ex nR IIC Gc
IECEX	Ex db I Mb / Ex db IIC Gb / Ex eb I Mb / Ex eb IIC Gb / Ex nR IIC Gc / Ex ta IIIC Da
CEC - Canada	Ex db IIC Gb / Ex eb IIC Gb / Ex ta IIIC Da Type 4X / 6P
NEC - USA	Class I Zone 1 AEx db IIC Gb / Ex eb IIC Gb Zone 20 AEx ta IIIC Da Type 4X / 6P
CCC - China	Ex d I Mb / Ex d IIC Gb / Ex e I Mb / Ex e IIC Gb / Ex nR IIC Gc / Ex tD A20
CCoE - India	Ex db I Mb / Ex db IIC Gb / Ex eb I Mb / Ex eb IIC Gb / Ex nR IIC Gc
ABS	Specified ABS Rules
LLOYD'S	Ex db I Mb / Ex db IIC Gb / Ex eb I Mb / Ex eb IIC Gb / Ex nR IIC Gc / Ex ta IIIC Da

CERTIFICATION NO.:

ATEX	CML 19ATEX1330X & CML 19ATEX4331X
IECEX	IECEX CML 19.0101X
CEC - Canada	CSA 2310046
NEC - USA	CSA 2310046
CCC - China	2021312313000376
CCoE - India	PESO P494321/5 & P494321/14
ABS	20-LD1944057-PDA
LLOYD'S	LR2124442TA

IP RATING:	IP66, IP68 (2 metres for 24hrs) & Type 4X/6P
OPERATING TEMPERATURE:	Washer - None -60°C to +135°C Washer - Fibre -40°C to +95°C Washer - Nylon -40°C to +135°C Washer - PTFE -60°C to +135°C
MATERIALS:	Brass or Stainless Steel
PLATING:	Electroless Nickel

Male and Female Thread References and Size information can be found on page 77 of our product catalogue. Adaptor and Reducer size information is available on request sales@peppers.co.uk.

Male and female threads are manufactured in accordance with:-

- ISO Metric threads to ISO 965-1, ISO 965-3, BS3643 and IEC 60423
- NPT and NPS threads are in accordance to ANSI B1.20.1
- PG threads to DIN40430
- ET threads to Imperial Conduit BS31
- ISO Pipe Parallel to ISO 228 and BS2779 (BSPP, G, R, PF & Tpy 6)
- ISO Pipe Taper to ISO 7-1 and BS21 (BSPT, Gc, Gk, Rk, PT & Kmpy 6)

NOTES

- Assembly instructions must be read prior to installation and adhered to in full.
- For Ex db applications female threads must comply with clause 5.3 of IEC 60079-1.
- For Ex nR applications parallel entry threads must be installed with a suitable entry thread seal.
- ATEX / IECEX / CSA versions are supplied as standard.

- Peppers supply products with parallel entry threads that conform to the flameproof threaded joint requirements of IEC/EN 60079-1 and other equivalent standards. We usually incorporate a thread run out according to general machining techniques and parts will not have a full form thread for the entire length. Peppers Cable Glands Limited will not be held responsible for clients' installations where this has not been taken into account.