

**Application**

Hazardous and Industrial areas

**Protection Degree**

IP66 or 67

**Certification**

ATEX & IECEx (Zone 0, 1 & 2; Zone 20, 21 & 22)  
 CSA Ex e (Class 1 Zone 1 & Zone 2)  
 FM AEx e (Class 1 Zone 1 & Zone 2)  
 TR CU Ex e (Zone 1 & Zone 2)  
 NEMA 4X (CSA, UL & FM)  
 Class 1 Division 2

**Material**

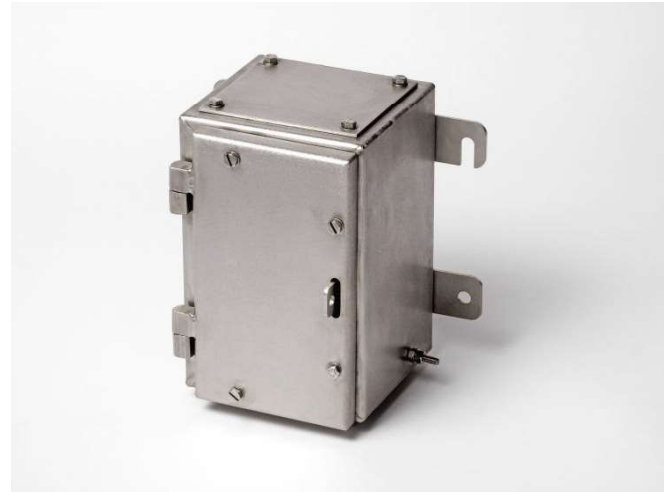
Stainless steel 316 (1.4404) or Mild steel

**Temperature Rating**

Hazardous Area: -50°C to +175°C  
 Non Hazardous: -60°C to +200°C

**Power Rating**

19.874W



**Terminal Populations (Maximum Number of Rails = 1)**

Calculations do not include the use of end stops, end plates and separators. Check that the enclosure can accommodate the cable bending radius and that the earth stud and entry location will permit the required number of terminals to be fitted

Weidmuller		Phoenix		Wago	
SAK 2.5	21	UK 2.5 N	25	280-992	24
SAK 4	19	UK 3 N	25	280-999	24
SAK 6	16	UK 5 N	21	281-691	20
SAK 10	12	UK 10 N	12	281-992	20
SAK 16	10	UK 16 N	10	281-993	20
SAK 35	7	UK 35 N	8	282-691	15
SAK 70	5			284-691	12
WDU 2.5	25			283-691	0
WDU 4	21			285-691	0
WDU 6	16			280-998	24
WDU 10	12			281-998	20
WDU 16	10			264-120	21
				264-220	12
				264-132(2)	4
				264-134(4)	3
				262-132(2)	4
				264-134(4)	3

**Drilling Envelope Dimensions (mm)**

	Side A - C		Side B - D	
	140	200	140	200
Width	87	87	144	144
Height	75	135	75	135

\* With glandplate fitted

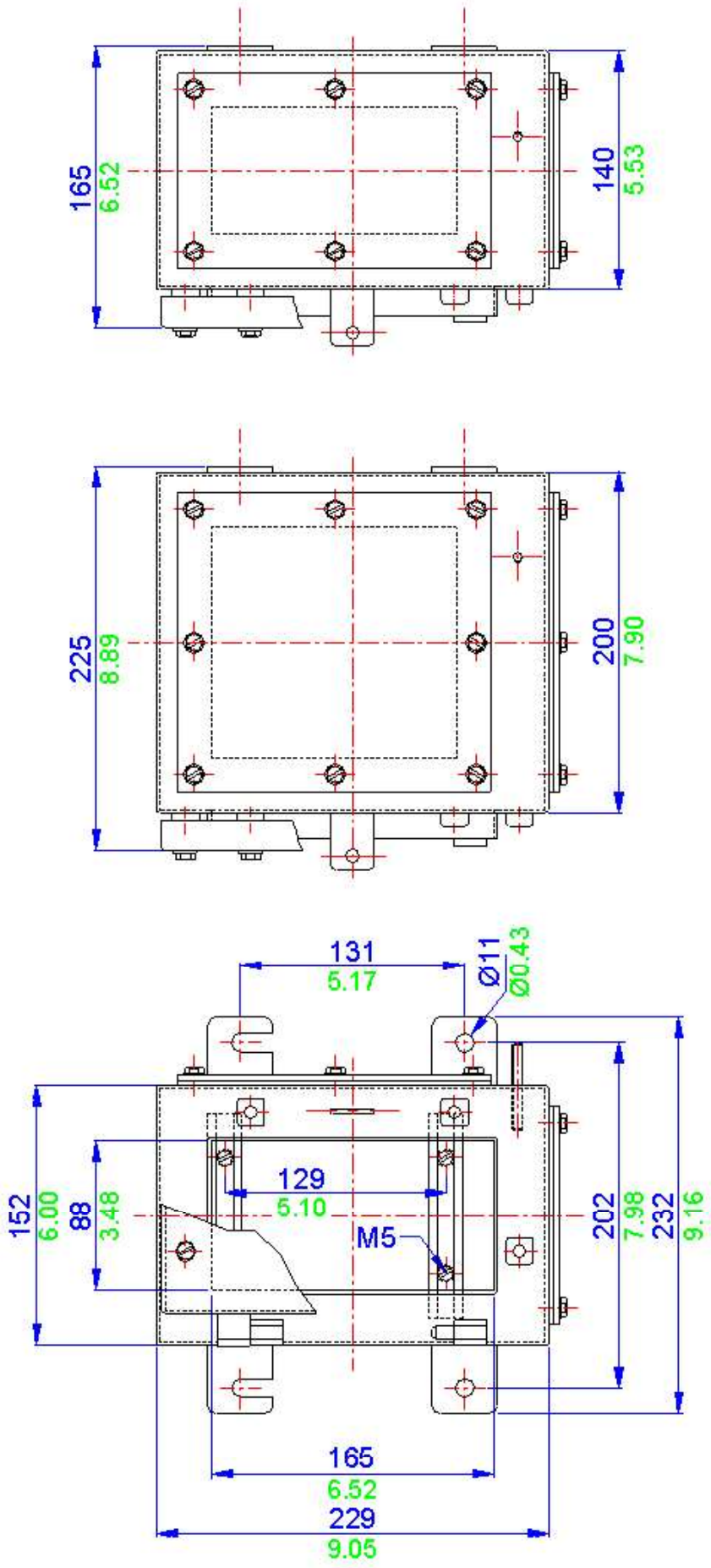
**Gland Entry Matrix \***

Size	Side A - C		Side B - D	
	140	200	140	200
M16	4	9	8	16
M20	2	6	6	9
M25	1	4	3	6
M32	1	2	2	4
M40	1	1	2	2

\* Using standard gland clearances

**Specifications**

Part Number	Material	Width (mm)	Length (mm)	Depth (mm)	Weight (g)
SX0.140	Stainless Steel	152	229	140	3200
SX0.200	Stainless Steel	152	229	200	4000
MSX0.140	Mild Steel	152	229	140	3200
MSX0.200	Mild Steel	152	229	200	4000



All blue dimensions in mm, all green dimensions in decimal inches (drawing not to scale)