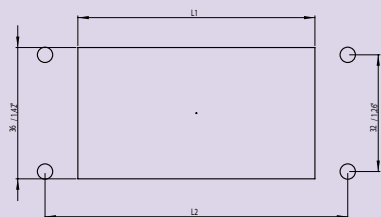


## Technical Information



## Formed punch for MinD



### Features

- For punching cut-outs in sheet metal.
- Simple operation to get desired cut-outs in sheet metal.
- Fast, clean, shaving- and burr-free.

### Product Description

For the punching of cut-outs for multipoint connectors MinD.  
For hydraulic operation.

### Technical Data

- Maximum sheet metal thickness:
- Sheet steel ST 37: 1.75 mm

- Stainless steel: 1 mm
  - Aluminium: 2 mm
  - Pre-drill  $\varnothing$ : 10.5 mm; 0.41"
  - Screw housing  $\varnothing$ : 9.5 mm; 0.37"
- Further technical information → below

### Scope of Delivery

- Punch complete with stamp, die, bolt and nut

### Accessories

- Spare bolt → below
- Spare nut → below

Description	No. of pins	Hole size		Order No.
		mm	mm	
Formed punch for MinD	9	19.8 x 11.3	0.78 x 0.44	2683-0000-00-09
Formed punch for MinD	15	28.2 x 11.3	1.11 x 0.44	2683-0000-00-15
Formed punch for MinD	25	41.9 x 11.3	1.65 x 0.44	2683-0000-00-25
Formed punch for MinD	37	58.4 x 11.3	2.3 x 0.44	2683-0000-00-37

## Accessories

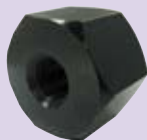
### Spare bolt



Order No.

2683-0000-38-38

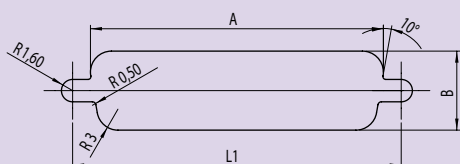
### Spare nut



Order No.

2683-0000-00-38

## Technical Information

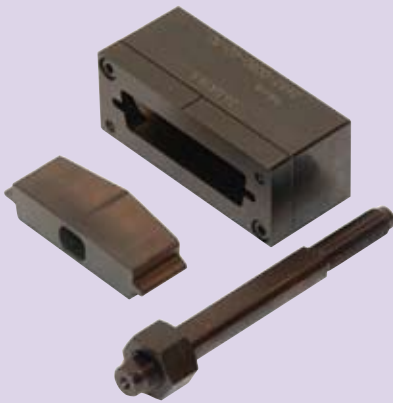


L1 hole spacing for:

9-pin connector	25 mm
15-pin connector	33.3 mm
25-pin connector	47 mm
37-pin connector	63.5 mm
50-pin connector	61 mm

# Punches

## Formed punch for MinD



### Features

- For punching cut-outs in sheet metal.
- Simple operation to get desired cut-outs in sheet metal.
- Fast, clean, shaving- and burr-free.

### Product Description

For the punching of cut-outs for multipoint connectors MinD. Optionally with hydraulic or wrench operation.

- 50-pins with mounting holes

### Technical Data

- Punch size: 55.7 x 13.9 mm

- Maximum sheet metal thickness:

- Sheet steel ST 37: 1.75 mm
- Stainless steel: 1.0 mm
- Aluminium: 2.0 mm
- Pre-drill Ø: 12.5 mm; 0.49"
- Screw housing Ø: 9.5 mm; 0.37"

### Scope of Delivery

- Punch complete with stamp, die, bolt and nut

### Accessories

- Spare bolt → below
- Spare nut → below

Description	Order No.
Formed punch for MinD 55.7 x 13.9	2683-0000-00-50

## Accessories

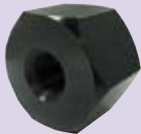
### Spare bolt



### Order No.

2683-0000-38-12

### Spare nut



### Order No.

2683-0000-00-12

## Turn lock formed punch



### Features

- For punching turn lock cut-outs in sheet metal.
- Simple operation to get desired cut-outs in sheet metal.
- Fast, clean, shaving- and burr-free.

### Product Description

For sash lock and turn lock cut-outs. Hydraulic operation.

### Technical Data

- Maximum sheet metal thickness:

- Sheet steel: 2.0 mm
- Stainless steel: 2.0 mm
- Aluminium: 3.0 mm
- Screw housing Ø: 9.5 mm; 0.37"
- Pre-drill Ø: 16 mm; 0.63"

Further technical information → below

### Scope of Delivery

- Punch complete with stamp, die, bolt and nut

### Accessories

- Spare bolt with nut → below

Description	Order No.
Turn lock formed punch 20.1 x 22.5	2683-0920-22-01
Turn lock formed punch 20.2 x 23.1	2683-0920-23-01

## Accessories

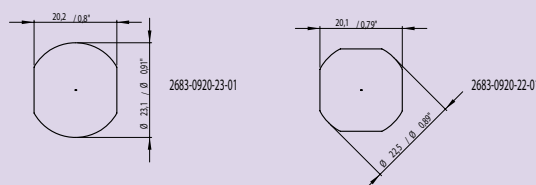
### Spare bolt with nut



### Order No.

2623-0712-12-00

## Technical Information



## High performance cutting oil



### Product Description

- In plastic bottle with nozzle
- Facilitates punching tool operation
- Reduces power force
- Increases service life

- Can also be used for thread lubrication of square actuation screws
- Skin-friendly, odourless

### Scope of Delivery

- 1 plastic bottle, 0.25 l

Description	Order No.
High performance cutting oil	2684-0700-25-00