

**DESCRIPTION**

Solenoid valve 2 way normally closed  
 direct acting poppet type.  
 With explosion proof coil certified:  
 CESI 03 ATEX 344 ExII2G/D Eex "d" IIC T6

**VALVE CONSTRUCTION**

Body Brass  
 Seal material FPM

**EXPLOSION PROOF CONSTRUCTION**

Housing Red colour alloy  
 Electrical connection 1/2" NPT

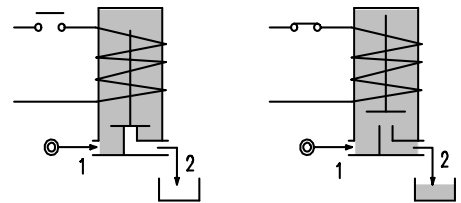
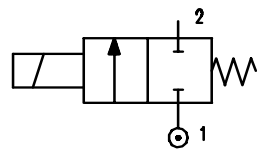


**2**

**FEATURES**

Maximum allowable pressure 80 bar  
 Maximum fluid viscosity 25cSt (mm<sup>2</sup>/s)  
 Ambient temperature : -10°C +40°C  
 Mounting position with vertical coil above

**OPTIONS :** Manual override  
 Electroless nickel plating  
 Stainless steel seat



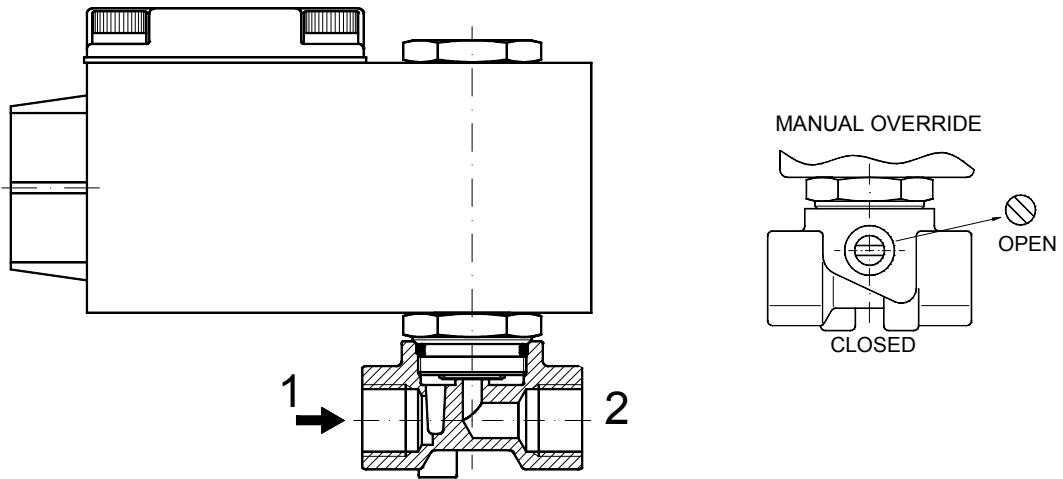
**NOTE:** The solenoid valve is suitable for contact with **NOT** potential explosive medias only.

CODE ②	Connection G ISO 228	Orifice mm	KV m <sup>3</sup> /h	Differential pressure bar			Nominal power		Coil Series	Seal	Temperature range °C
				Min	Max		AC Holding	DC Watt			
					AC	DC					
A106AV15///.....	1/8"	1.5	0.07	0	30	26	12 VA	8 W	A6	FPM=V	-10 +130
A106AV20///.....	1/8"	2	0.1	0	22	20					
A106AV25///.....	1/8"	2.5	0.15	0	16	14					
A106AV35///.....	1/8"	3.5	0.32	0	10	8					
A106BV15///.....	1/4"	1.5	0.07	0	30	26					
A106BV20///.....	1/4"	2	0.1	0	22	20					
A106BV25///.....	1/4"	2.5	0.15	0	16	14					
A106BV35///.....	1/4"	3.5	0.32	0	10	8					
A106BV45///.....	1/4"	4.5	0.41	0	6.5	3.5					
A106BV52///.....	1/4"	5.2	0.47	0	4	1.8					
A106BV64///.....	1/4"	6.4	0.64	0	3	1					

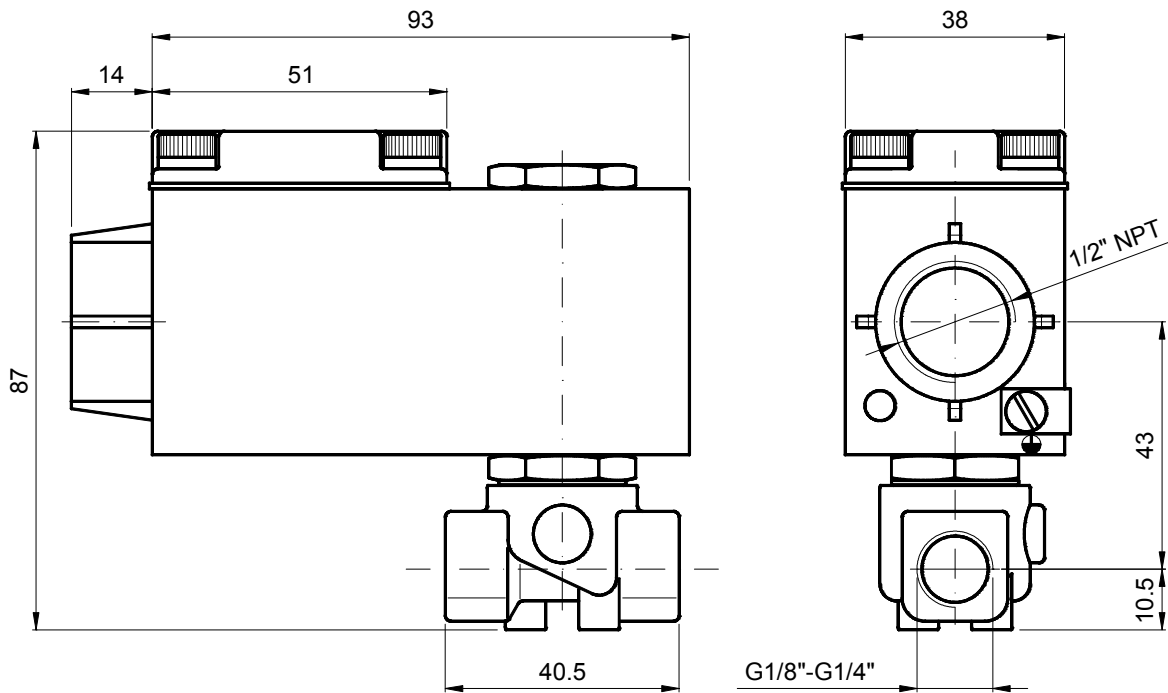
② Coil

COILS	Alternating Current ~50/60Hz Volt				Direct Current Volt			Electrical connection
	24	48	110	220 230	12	24	48	
Series <b>A6</b> Code ②	A6B	A6C	A6D	A6E	A60	A61	A62	1/2" NPT

**DESCRIPTION**  
 Voltage tolerance  
 AC +15% -10%  
 DC ± 10%  
 Protection class IP66



### OVERALL DIMENSION



Weight = 0.60 Kg

**DESCRIPTION**

Solenoid valve 2 way normally closed  
 direct acting poppet type.  
 With explosion proof coil certified:  
 CESI 03 ATEX 344 ExII2G/D Eex "d" IIC T6

**VALVE CONSTRUCTION**

Body Brass  
 Seal material FPM

**EXPLOSION PROOF CONSTRUCTION**

Housing Red colour alloy  
 Electrical connection 1/2" NPT

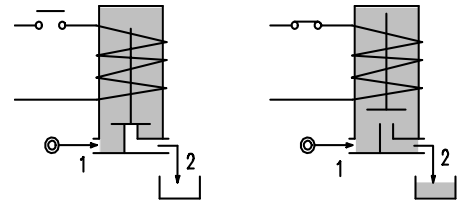
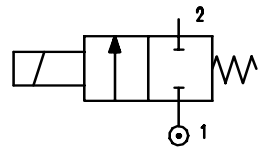


**2**

**FEATURES**

Maximum allowable pressure 80 bar  
 Maximum fluid viscosity 25cSt (mm<sup>2</sup>/s)  
 Ambient temperature : -10°C +40°C  
 Mounting position with vertical coil above

**OPTIONS :** Electroless nickel plating  
 Stainless steel seat



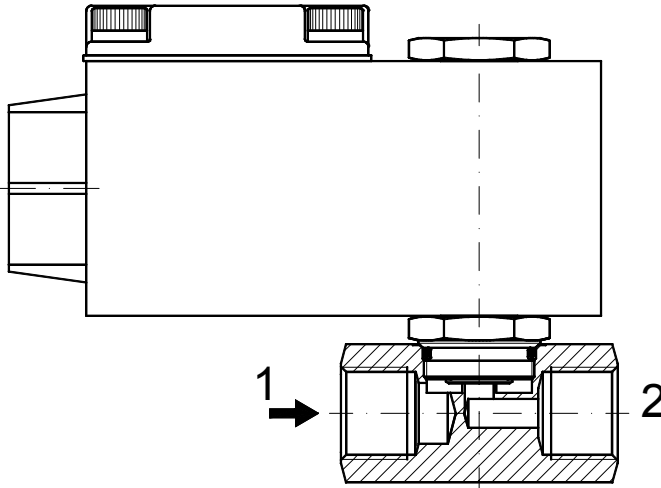
**NOTE:** The solenoid valve is suitable for contact with **NOT** potential explosive medias only.

CODE ②	Connection G ISO 228	Orifice mm	KV m <sup>3</sup> /h	Differential pressure bar			Nominal power		Coil Series	Seal	Temperature Range °C
				Min	Max		AC Holding	DC Watt			
					AC	DC					
A106CV30///.....	3/8"	3	0.25	0	15	10	12 VA	8 W	A6	FPM=V	-10 +130
A106CV35///.....	3/8"	3.5	0.32	0	10	8					
A106CV40///.....	3/8"	4	0.36	0	8	5					
A106CV45///.....	3/8"	4.5	0.41	0	6.5	3.5					
A106CV52///.....	3/8"	5.2	0.47	0	4	1.8					
A106CV64///.....	3/8"	6.4	0.64	0	3	1					
A106DV30///.....	1/2"	3	0.25	0	15	10					
A106DV35///.....	1/2"	3.5	0.32	0	10	8					
A106DV40///.....	1/2"	4	0.36	0	8	5					
A106DV45///.....	1/2"	4.5	0.41	0	6.5	3.5					
A106DV52///.....	1/2"	5.2	0.47	0	4	1.8					
A106DV64///.....	1/2"	6.4	0.64	0	3	1					

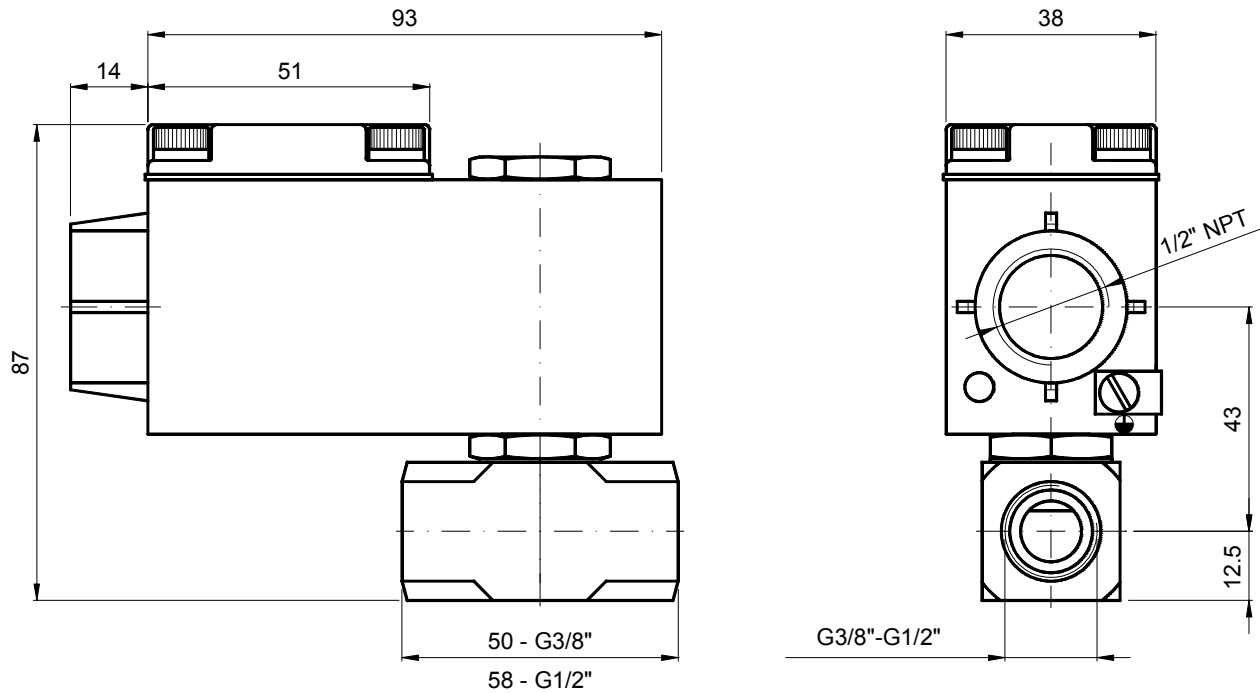
② Coil

COILS	Alternating Current ~50/60Hz Volt				Direct Current Volt			Electrical connection
	24	48	110	220 230	12	24	48	
Series <b>A6</b> Code ②	A6B	A6C	A6D	A6E	A60	A61	A62	1/2" NPT

**DESCRIPTION**  
 Voltage tolerance  
 AC +15% -10%  
 DC ± 10%  
 Protection class IP66



### OVERALL DIMENSION



Weight = 0.66 Kg