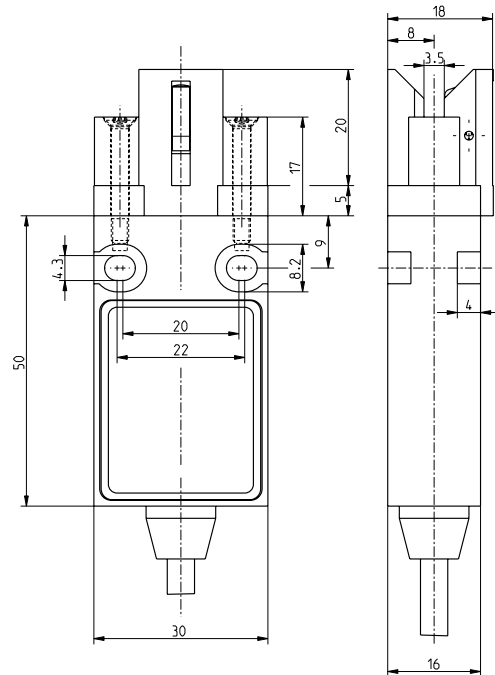
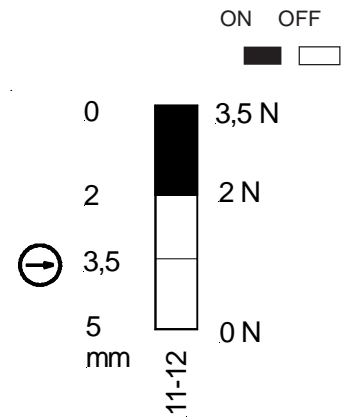
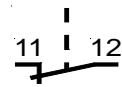


Dimensional drawing**Switching path****Circuit diagram**

Switching path and circuit diagram by plugged-in actuator

Technical Data:

Regulations:	IEC 60947-5-1 EN 81
Housing:	shockproof thermoplastic, self extinguishing UL 94-V0
Protection:	IP 65 as per EN 60529
Switching element:	1 NC
Contact material:	fine silver
Switching system:	Slow action contact, positive break normally closed contact
Temperature range:	- 20 ° C to + 75 ° C
Mounting connection:	permanently moulded cable, H03 VV-F 2 x 0,75 mm ² , 1,5 m
Actuation:	
Fixing:	provided for M4
Distance of fixing:	20 - 22 mm
Colour code:	11 = BN 12 = BU
Electrical design:	IEC 60947-5-1
Electrical load:	250 VAC 3 A (AC-15) 230 VDC 0,2 A (DC-13)
Minimum load:	24 V AC/DC 10 mA
Short circuit protection:	3 A gL/gG D-fuse
Mechanical operating life:	>1 million operation
Switching frequency:	max. 1800 operation / h

Part No.: 14.9.66.9.02 (1178871)

Author: 2008-07-03 sh

Checked:

Modification:

Checked:

Page: 1 / 1