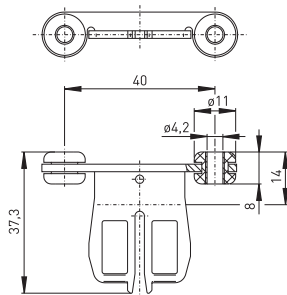


## Accessories for Ex safety switches with separate actuator // AZ 15/16-B1-2245 with rubber Order no.: 01.08.0224

### Features/Options

- Actuating radius on hinged guards a = 150 mm and b = 150 mm
- Axial misalignment  $x = 14$  mm
- Rubber mounting damps vibrations on guard devices
- Max. 200 Ncm tightening torque for fixing the actuator

### Dimensions



Errors and omissions excepted.