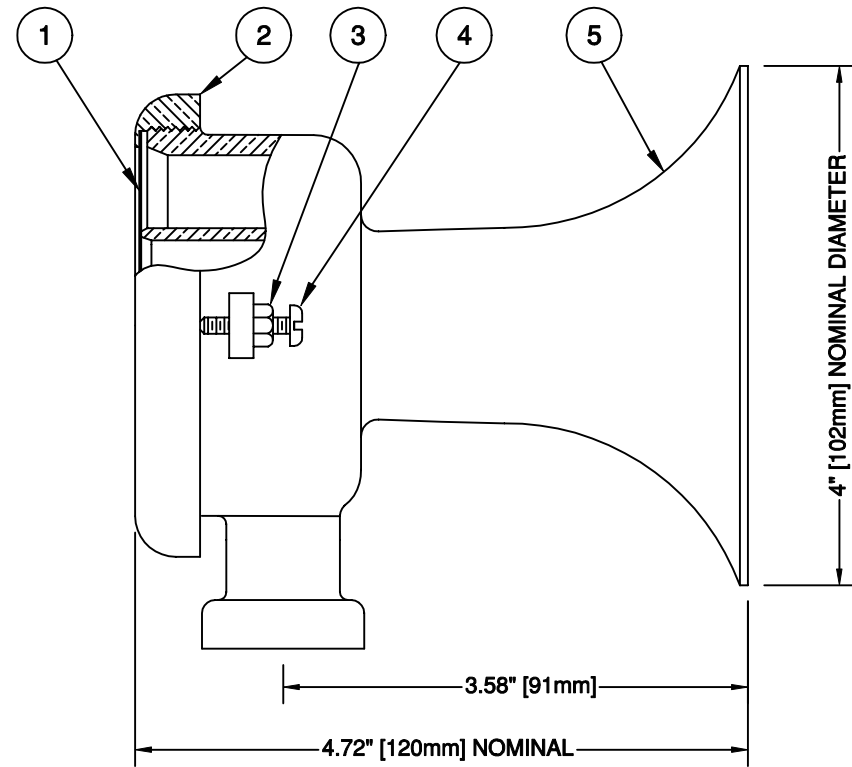
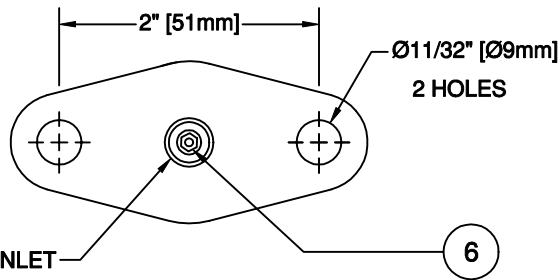
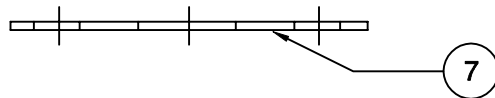
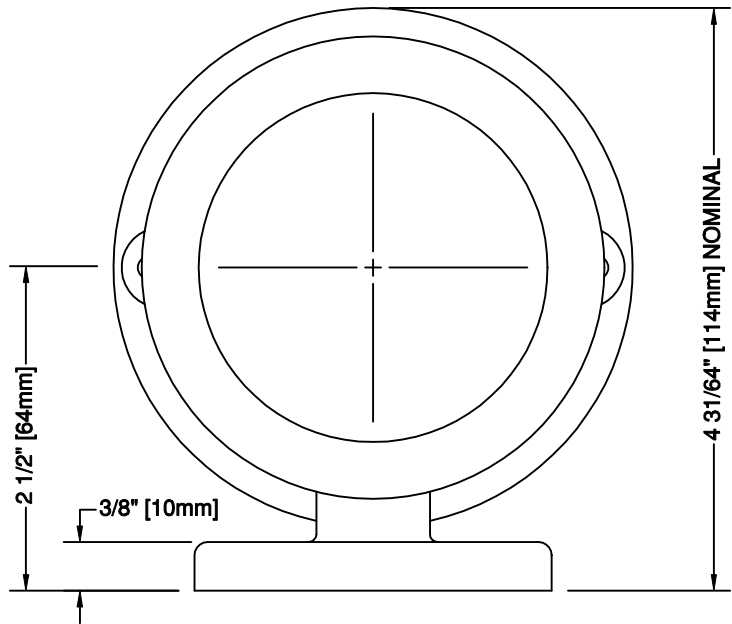



REVISIONS				
ZONE	REV	DESCRIPTION	DATE	APPROVED
	1	SUPERCEDES DWG. No. 3100	94-10-24	D. W. C.



SPL (Loudness): 132 ± 1dB (C) on Total at 1 meter blowing with 100 PSIG (7 Bars) pressure with air consumption of 14 SCFM (7 L/Sec)
 Audibility Range: Up to 1 km in warm, still air
 Fundamental Frequency: 745 ± 4% Hz
 Operating Pressure Range: 50-150 PSI. (3.4 -10 Bars)
 Operating Temperature: -15°C TO 80°C
 See drawing number 31111 for air horn controls
 See drawing number 31800 for typical model "CA" installation

REF	PART	DESCRIPTION	MATERIAL	SPECIFICATION	QTY
1	31003	DIAPHRAGM DISC 0.018" THICK	STAINLESS STEEL	ASTM-A167	1
2	31002	ADJUSTING RING	BRONZE	SAE-40	1
3	31005	LOCKNUT 10-32	BRASS	ASTM F594	2
4	31004	MACHINE SCREW, 10-32x1"	BRASS	ASA B18.6	2
5	31001	BELL BODY	BRONZE	SAE-40	1
6	31006	RESTRICTOR, 3/32"	BRASS	ASTM-B16	1
7	31013	GASKET	CORK/NEOPRENE	COMMERCIAL	1

CONFIDENTIAL INFORMATION CONTAINED HEREIN IS CONFIDENTIAL; IT IS THE PROPERTY OF AIRCHIME MFG. CO. LTD. IT IS TO BE USED SOLELY FOR THE PURPOSE PROVIDED AND IT IS NOT TO BE DISCLOSED TO OTHERS WITHOUT THE PRIOR WRITTEN CONSENT OF AIRCHIME MANUFACTURING COMPANY LIMITED. © CopyRight Airchime Mfg. Co. Ltd.	CONTRACT NUMBER:		 AIRCHIME MANUFACTURING CO. LTD. LANGLEY, B.C. CANADA V4W 3S8	
	CUSTOMER:			
	DRAWN BY: <i>L. H. J.</i>	DATE: 1994-10-24	MODEL CA AIR HORN FUNDAMENTAL FREQUENCY: 745 Hz	
	CHECKED BY: <i>D. W. C.</i>	APPROVED BY: <i>D. E. S.</i>	SCALE: NONE	WEIGHT: 2.87 LBS