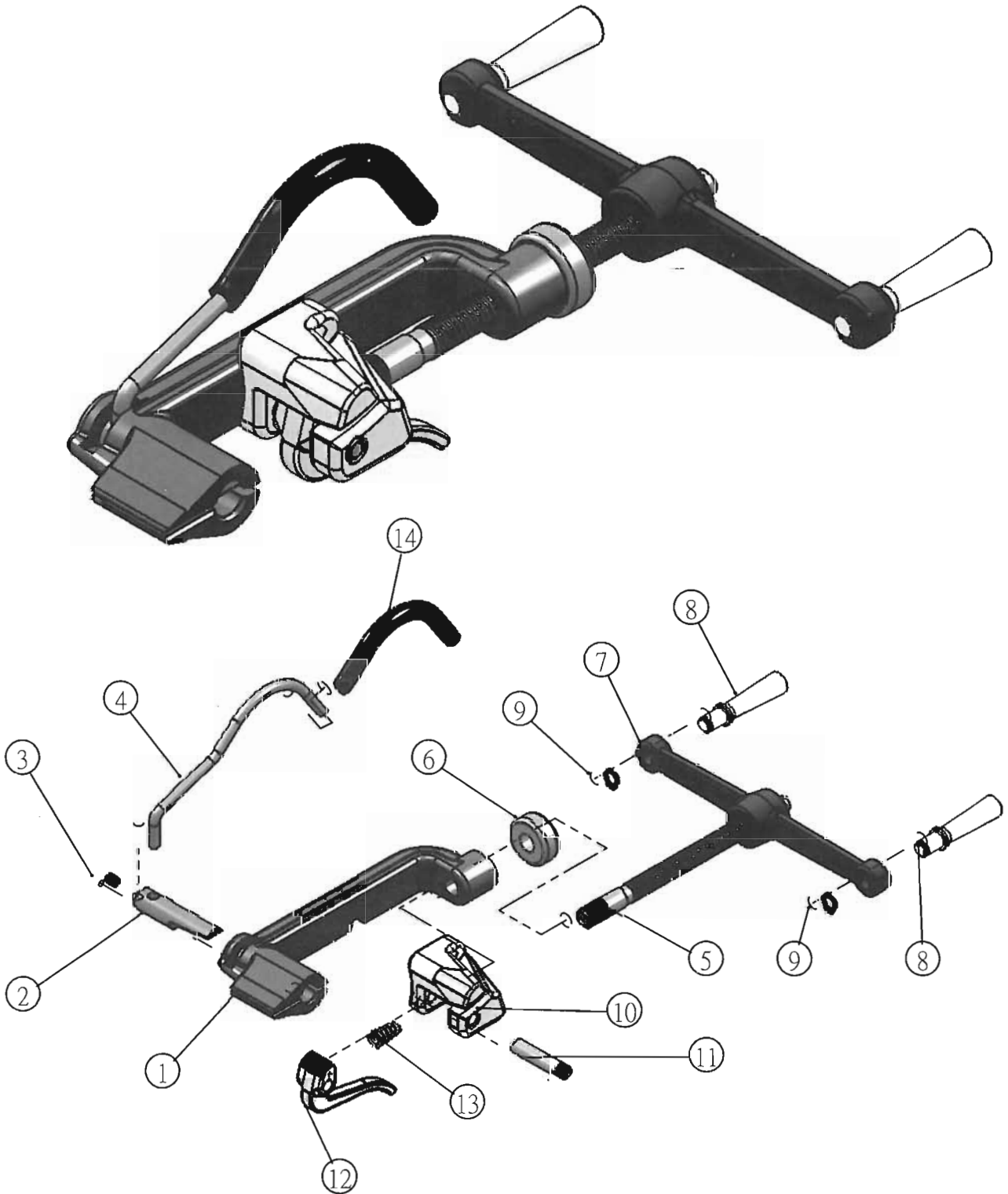


TENSIONING TOOL

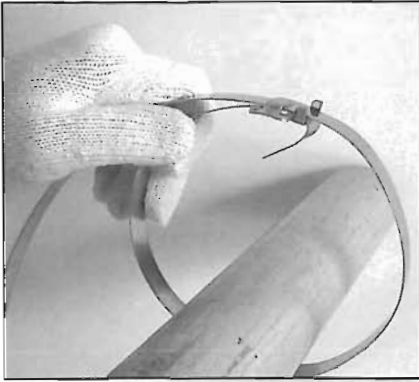
YYS262-01 V2



Part No.	Part Name	Q'ty/Tool	Part No.	Part Name	Q'ty/Tool
01	Body	1	08	Axle Handle	2
02	Cutter	1	09	Clip	2
03	Screw	1	10	Holding Body	1
04	Cutter Handle	1	11	Pin	1
05	Thread	1	12	Holding Dog	1
06	Ball Bearing	1	13	Spring	1
07	Axle	1	14	PVC Shoe	

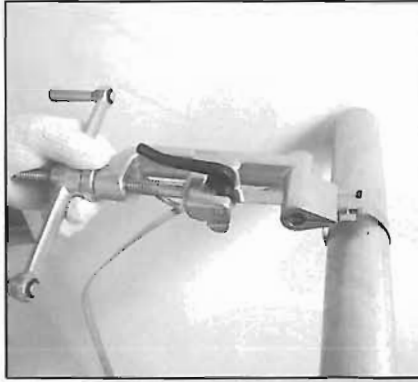
Keep tool well oiled and clean. Please order parts by number and name.

1



Insert band through buckle, teeth toward the user, ears up. For better result, continue band around object once again through buckle. Bend end of band under buckle.

2



Push axle handle so the band can be placed in slots of tool. Push nose of tool against the buckle.

3



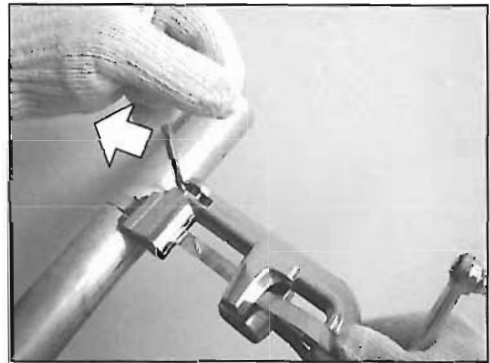
Place finger on buckle bridge and apply tension by turning handle.

4



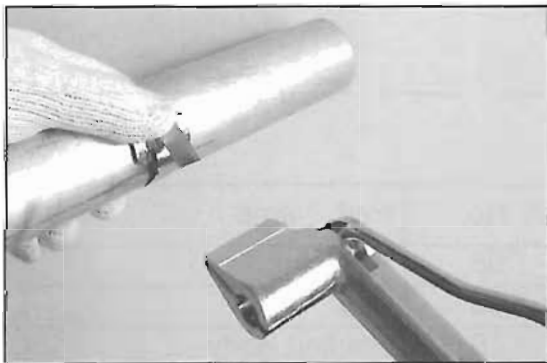
When desired tension is reached, swing tool over buckle. This movement increase tension of band and, to avoid breakage, handle must be reversed slightly as tool is swing over.

5



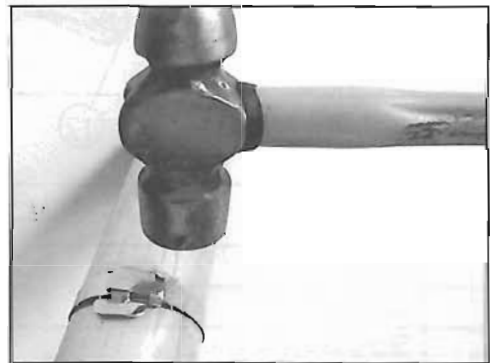
Pull cutter handle to cut band.

6



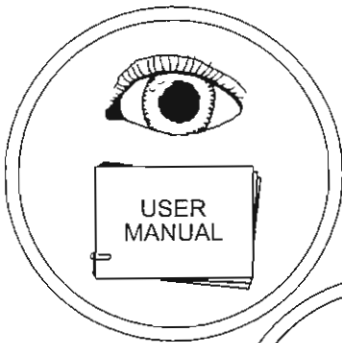
Remove tool, whilst holding band down with thumb.

7



Hammer ears down to seal the band.

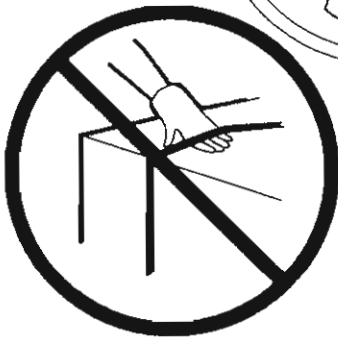
SAFETY INSTRUCTIONS



1. THIS TOOL (OR CUTTER) WAS DESIGNED AND MANUFACTURED FOR SAFE HANDLING DURING THE OPERATION, FOR EFFECTIVE SERVICE, PLEASE READ AND FOLLOW ALL SAFETY, MAINTENANCE AND OPERATING INSTRUCTIONS.



2. ALWAYS WEAR EYE, FACE, AND HAND PROTECTION WHEN OPERATING THIS TOOL.



3. DO NOT PUT HANDS OR OTHER PARTS OF THE BODY BETWEEN THE STRAP AND THE PACKAGE.



4. WHEN CUTTING THE STRAP, HOLD THE UPPER PORTION AND STAND AT A SAFE DISTANCE AWAY FROM THE STRAP, AS THE LOWER STRAP WILL SNAP FORWARD.



5. DO NOT STAND IN LINE WITH THE STRAP WHILE IT IS BEING TENSIONED, THE STRAP COULD BREAK IF OVER TENSIONED.



6. USE THE ORIGINAL REPLACEMENT PARTS.

MAINTENANCE INSTRUCTIONS

- CLEAN THIS TOOL WITH BRUSH OR PERIODICALLY BLOWING DUST OR DIRT OFF, WITH CLEAN, DRY COMPRESSED AIR.
- APPLY LIGHT MACHINE OIL TO ALL MOVING PARTS.