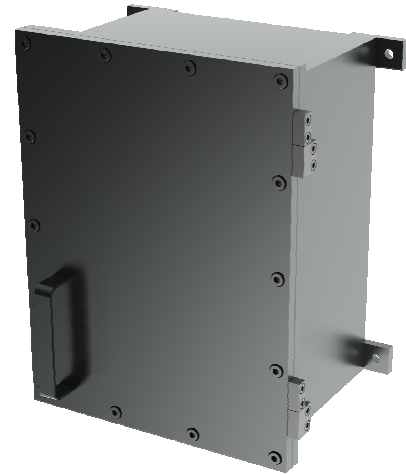


Nautilus Submersible Enclosure

IP68

The Nautilus enclosure range combines Ex e hazardous area certification with an unparalleled level of ingress protection. Primarily designed for submersible applications, it is certified IP68 at 100 metres for five days to EN60529.

Manufactured from 316 Stainless Steel, the Nautilus utilises a flexible design approach. The sizes shown below are the most popular sizes, however any size of enclosure is possible as long as each dimension falls within the range of smallest to largest size, shown below. This affords a unique flexibility to create cost-effective, custom sized enclosures.



Apparatus

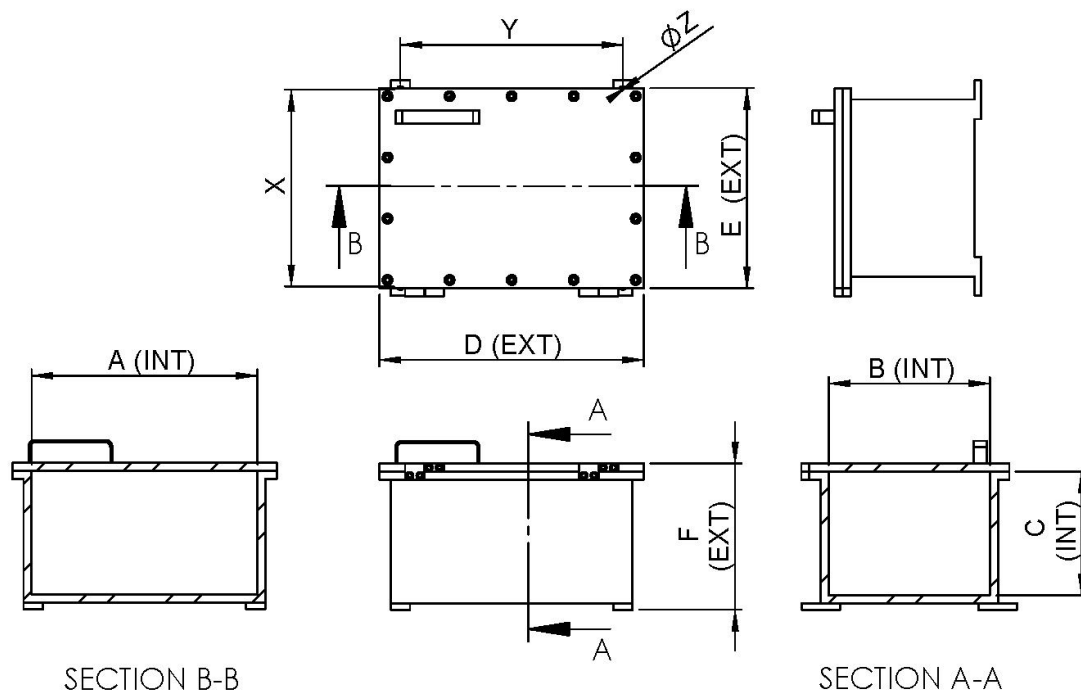
SSD Model	EXTERNAL Dimensions Length(D) x Breadth(E) x Depth(F)	INTERNAL Dimensions Length(A) x Breadth(B) x Depth(C)	Weight (kg)	Maximum Dissipated Power (W)	
				Ga, Gb, Db	Da
NAUT1	204 x 174 x 109mm	130 x 100 x 80mm	11	9.3	4.65
NAUT2	304 x 244 x 172mm	230 x 170 x 140mm	29	19	9.5
NAUT3	414 x 244 x 172mm	340 x 170 x 140mm	38	22	11
NAUT3A	414 x 294 x 172mm	340 x 220 x 140mm	44	29	14.5
NAUT4	474 x 284 x 222mm	400 x 210 x 190mm	53	32	16
NAUT5	424 x 324 x 222mm	350 x 250 x 190mm	54	32	16
NAUT6	470 x 390 x 233mm	390 x 310 x 190mm	86	36	18
NAUT7A	610 x 350 x 255mm	530 x 270 x 210mm	103	42	21
NAUT7B	510 x 450 x 255mm	430 x 370 x 210mm	108	42	21
NAUT8	570 x 480 x 255mm	490 x 400 x 210mm	124	44	22
NAUT9	710 x 330 x 255mm	630 x 250 x 210mm	113	44	22
NAUT10	770 x 420 x 295mm	690 x 340 x 250mm	155	50	25
NAUT11	1100 x 630 x 440mm	1020 x 570 x 390mm	440	68	34

*All dimensions relate to enclosure with external flange. Other sizes available on request.

Standard Specification

Apparatus Type	Submersible Enclosure Range
Ingress Protection	IP68 to EN60529, 100m for 5 days
Material	316 Stainless Steel
Components	Ex e certified terminals
Voltage Rating	As terminal
Cable Entry	Variable entry combinations on any of the 4 vertical sides.
Orientation	Universal
Mounting	Via rear mounting lugs
Certification	
Area Classification	Group IIC Category 2 G (Zone 1, 2)
Type of Protection	Ex e (Increased Safety), Ex ia (Intrinsically Safe) and Ex ta (Dust)
Apparatus Coding	Ex e IIC T5 Gb, Ex ia IIC T5 Ga/Ex ib IIC T5 Gb, Ex ta IIIC T100°C Da/Ex tb IIIC T100°C Db
Ambient Temperature	-50°C to +55°C
Certificate Number	ATEX 14ATEX3021X , IECEx CML 14.0008X

Apparatus Dimensions (External Flange)



	NAUT 1	NAUT 2	NAUT 3	NAUT 3A	NAUT 4	NAUT 5	NAUT 6	NAUT 7A	NAUT 7B	NAUT 8	NAUT 9	NAUT 10	NAUT 11
DIM X (mm)	160	230	235	289	291	327	393	353	453	483	423	423	655
DIM Y (mm)	114	154	264	264	324	274	320	460	360	420	560	620	960
DIM Z (mm)	11	12.5	12.5	12.5	12.5	12.5	12.5	12.5	12.5	12.5	12.5	12.5	17

Options

RALXXX	Paint Finish (Any RAL colour)
INT	Internal Flange
MSMP	Mounting plate (Plated Mild Steel)
SSMP	Mounting Plate (Stainless Steel)
277	Alternate supply voltage (e.g 277 = 277 volt supply)

Add the required suffix to the product reference, for example NAUT4RAL7001