

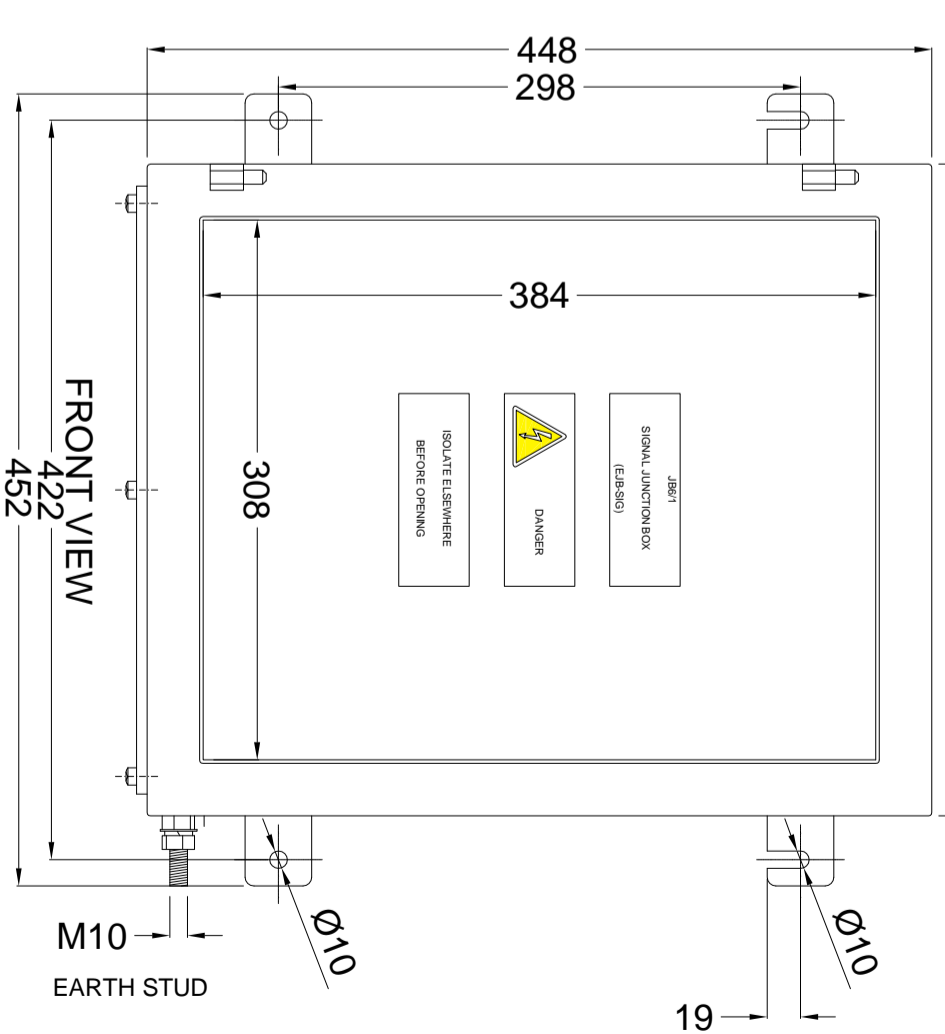
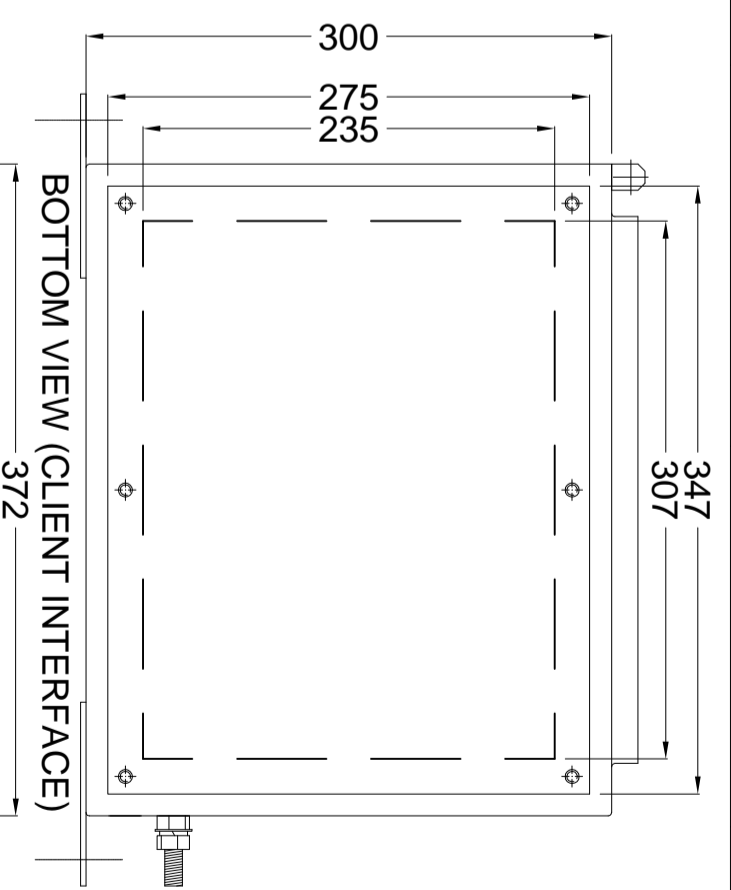
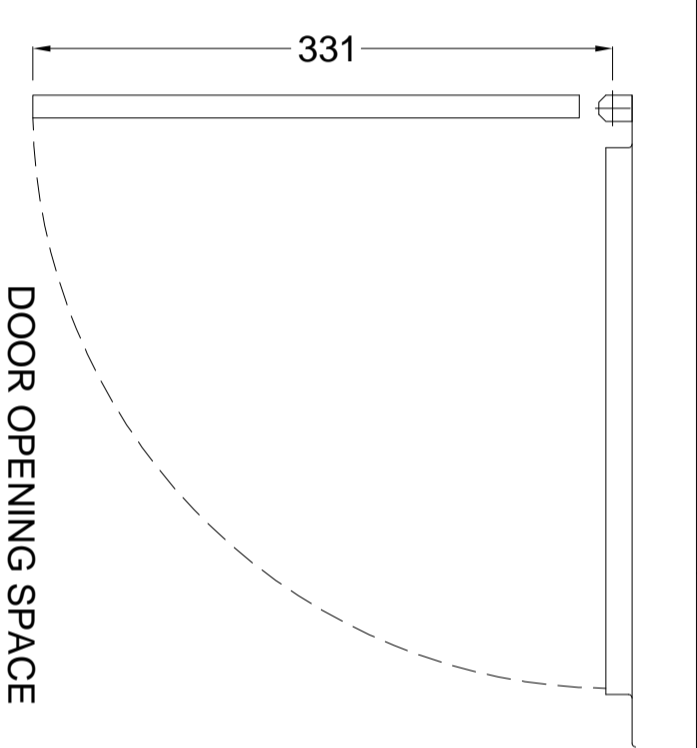
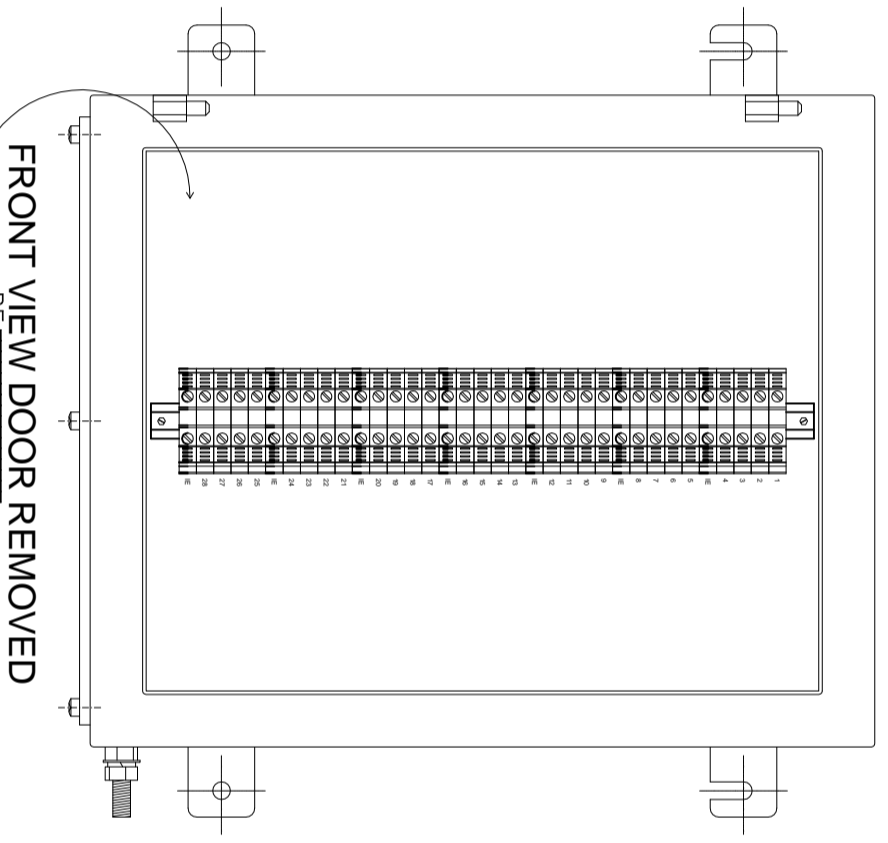
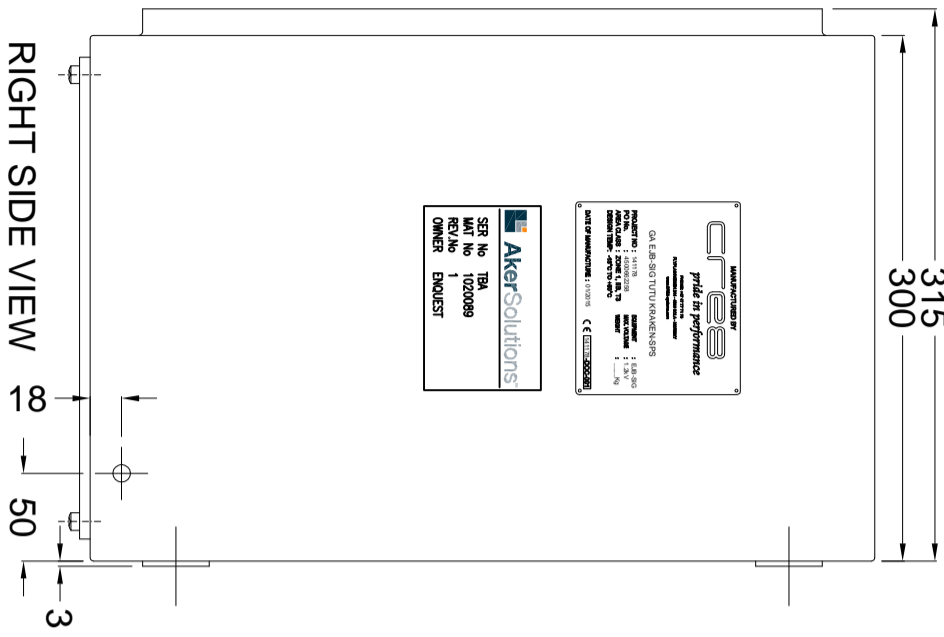


SER No TBA
 MAT No 1020089
 REV.No 1
 OWNER ENQUEST

MANUFACTURED BY
 CRAB
 pride in performance
 PHONE: +47 47 77 17 70
 F.V.P. A/S BREVIEN 214 - 4688 SOLA - NORWAY
 WWW.CRAB-SYSTEMS.COM

GA EJB-SIG TUTU KRAKEN-SPS
 PROJECT NO : 141178
 PO No. : 4500862258
 AREA CLASS : ZONE 1, IIB, T3
 DESIGN TEMP: -18°C TO +40°C
 EQUIPMENT : EJB-SIG
 MAX VOLTAGE : 1.2kV
 WEIGHT : Kg
 DATE OF MANUFACTURE : 01/2015

NAMEPLATES



- NOTES:
- [1] ALL DIMENSIONS ARE SHOWN IN MILLIMETRES.
 - [2] INTERNAL ACCESS VIA LEFT HAND SIDE HINGED REMOVABLE DOOR.
 - [3] ALL CABLES ENTRIES TO BE VIA BOTTOM GLAND PLATE (SUPPLIED UNDRILLED). GLANDS NOT SUPPLIED.
 - [4] TERMINALS SHALL BE IDENTIFIED, ADEQUATELY MARKED, GROUP SEGREGATED & SUITABLY POSITIONED TO ENSURE EASY IDENTIFICATION FOR INSTALLATION AND MAINTENANCE.
 - [5] JUNCTION BOX MANUFACTURED BY ABTECH TYPE SX3.300, 316L (1.4404) STAINLESS STEEL. ALL FASTENERS GRADE A4-80.
 - [6] JUNCTION BOX SUPPLIED LOOSE.
 - [7] CERTIFIED FOR USE IN HAZARDOUS AREA CLASSIFICATION : ZONE 1, GAS GROUP IIB, TEMPERATURE CLASS T3.
 - [8] ATEX/IEC MARKING : EX II 2 GD Ex e IIC T6 Gb (example only - TBA)
 - [9] INGRESS PROTECTION RATING : IP67
 - [10] LABELS AFFIXED TO JUNCTION BOX BY TAP WELDING.

- REFERENCE DOCUMENTS / DRAWINGS:
- 10002652803 141178-MD-001 ELECTRICAL TERMINATION DRAWING
 - 10002652800 141178-BOM-001 BILL OF MATERIALS
 - 10002652812 141178-HLS-001 SHIPPING, HANDLING & STORAGE PROCEDURE
 - 10002652804 141178-SPR-001 SPARE PARTS LIST
 - 10002652795 141178-OMM-001 INSTLN, OPERATION & MAINT MANUAL

SUPPL. REV	DATE	DESCRIPTION
02	16.12.2014	ISSUED FOR CONSTRUCTION
01	29.10.2014	ISSUED FOR CONSTRUCTION



Supp. doc. no. 141178-GA-002	Rev. 02	<p>Proprietary Information This document contains CRAB Systems confidential information. It is intended only for the person or entity to which it is addressed and any unauthorized use is strictly prohibited. It is provided for limited purposes and is not to be distributed, copied, or otherwise disclosed to any third parties without the prior written consent of CRAB Systems. Any use of this information in violation of the above conditions is prohibited. The document is to be returned to CRAB Systems upon completion of use for which it was provided.</p>
Sub. supp. doc. no.	Rev.	
<p>GENERAL ARRANGEMENT DRAWING (EJB-PWR) TUTU KRAKEN-SPS</p>		
Modified by E. Abrahamsen	Originator	
Checked by J.T. Slattem	Material no. (part) Ø: Olsen	
Approved by J.T. Slattem	Material spec.	
Document no. 10002652802	Doc. ver ECO no.	
Release date 16.12.2014	Reason for issue FOR CONSTRUCTION	
Est. Weight 16,6 KG	Sheet no 2 of 2	